

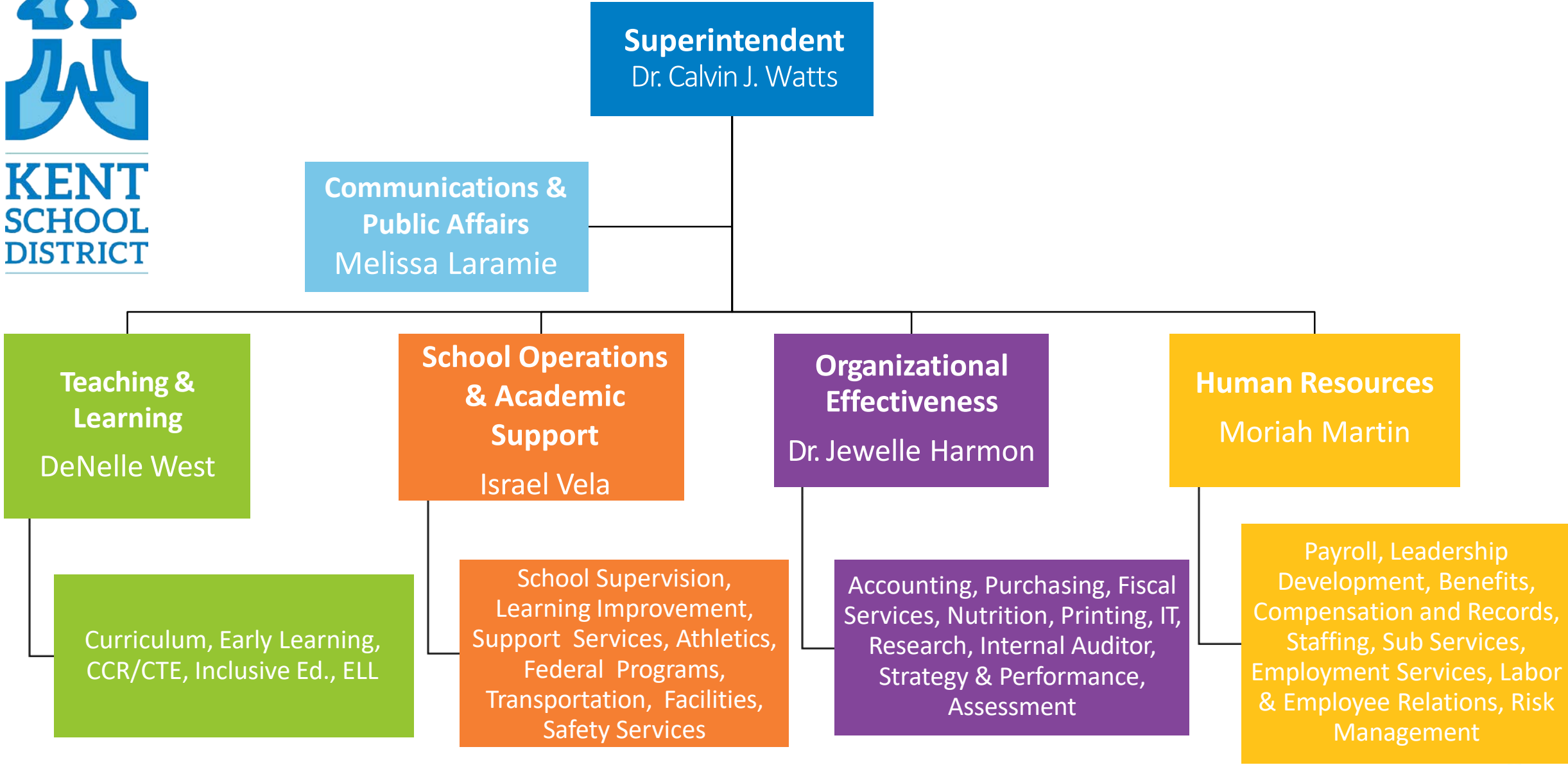


# Kent School District 2.0

JANUARY 2019



**KENT  
SCHOOL  
DISTRICT**





**Superintendent**  
Dr. Calvin J. Watts

**Executive Assistant**  
Karyn Howley

**Director, Communications & Public Affairs**  
Melissa Laramie

**Communications Operational Lead**  
Faith Sisley

**Communications Specialist**  
Whitley Horejsi

**Multimedia Communications Specialist**  
Kasey High

**Graphic Designer**  
Matt Anderson

**Communications Assistant**  
Rhiannon Berg

1



## Goal 1 ***PREPARE***

Prepare all students to be **college and career ready** by raising the academic and social learning bar and closing the gaps to student achievement and college completion.



**Chief Learning Officer**  
DeNelle West

**Executive Assistant**  
Sam Maffei

**Director, Teaching & Learning**  
Christine Corbley

**Executive Director, Learning Supports**  
Jennifer Jones

**Executive Assistant**  
Kimberly Wigginton

**Admin. Assistant**  
Annette Williams

**Coordinator, Early Learning**  
Christine Bilka

**Coordinators**  
Amy Abrams  
Marcie Baril  
Jon Rismiller  
Karen Stevens  
Christopher White

**Program Specialists**  
Kyung Chung- Math  
Nicole Kieffer-Math  
Mike Marshall- ELA/SS  
Colleen Oliver- HiCap  
Annette Venegas- Science  
Charlene Vermilion-ELA/SS

**Science Kit Inv. Manager**  
Amy Spies

**Admin. Assistant**  
Brandi Pepperdine

**Director, Inclusive Education**  
Spencer Pan

**Budgeting & Staffing Specialist**  
Kris Gregoire

**IE Assistant**  
Rebecca Ramos

**Beh. Int. Team (BCBA & Specialists)**  
Pearl Chan, Behavior  
Beth Stoughton, BCBA  
Unfilled, BCBA

**Intervention Team Assistants**  
Heather Matthews  
Theresa Berger  
Michael Williams  
Dameon Ellis  
Unfilled

**Director, Career & Technical Education**  
Lori Paxton

**Program Specialists**  
DeAnne Dige  
Jill Hoepfinger  
Bryan Reckling

**Work Based Learning Specialist**  
Melissa McEaney-Wassman

**Admin. Assistants**  
Melanie Self  
Lynda Zeiler

**Director, Multilingual Education**  
Nina "Will" Williams

**ELL & Dual Language Program Specialists**  
Jennifer Antrobus  
Narine Balayan  
Lizeth Godsey

**Admin. Assistants**  
Heather Braun  
Rochelle Kitts

**Program Specialists**  
Unfilled, Compliance  
Lynette Vogeley, ECSE

**Transition Coordinator, TOP**  
Susan Whitehall

**Admin. Assistant**  
Joni Anderson

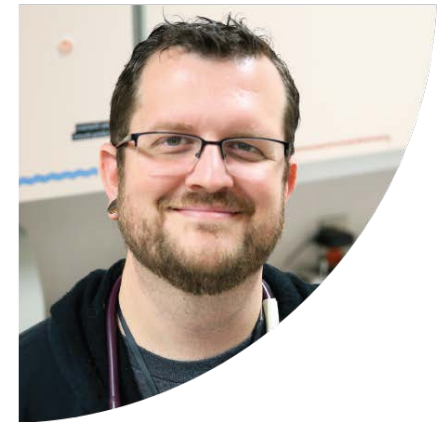
**Assistant Directors, IE**  
Mike Williams  
Jonathan Robinson

**Program Specialists**  
Noreen Bucknum  
Rachel Grant  
Erica Eller

**Admin. Assistants**  
Angela Dodge  
Kandace Hodgson  
Christie Six  
Jessica Brown  
Gina Campbell

## Goal 2 ***ENGAGE***

Engage parents, students, staff, and community in **two-way communication** focused on equity and excellence.





**Chief School Operations & Academic Support Officer**  
Israel Vela

**Executive Directors of Learning Improvement**  
Barbara L. Harris, Dr. Wade Barringer, Dr. Marion Smith Jr.

**Executive Assistant**  
Carolyn Currie

**Executive Director, Student & Family Support Services**  
Randy Heath

**Director, Athletics**  
Dave Lutes

**Director, Transportation**  
Justin Dennison

**Director, Facilities**  
Fred Long

**Director, Capital Planning**  
Dave Bussard

**Director, Student & Family Support Services**  
Rona Popp

**Assistant Director, Transportation**  
Doreen Stewart

**Supervisor II, Custodians**  
Sandra DeMarre

**Supervisor II, Maintenance**  
Gordon Cook

**Assistant Director, Student & Family Support Services**  
Cheri Simpson

**Supervisor II, Transportation Services**  
Blaine Sells

**Coordinator, Health Services**  
Unfilled

**Safety Operations Supervisor**  
Tim Kovich





**Chief School Operations & Academic Support Officer**  
Israel Vela

**Executive Assistant to EDLIs**  
Bree Eggleston

**Executive Director of Learning Improvement**  
Barbara L. Harris

**Executive Director of Learning Improvement**  
Dr. Marion Smith, Jr.

**Executive Director of Learning Improvement**  
Dr. Wade Barringer

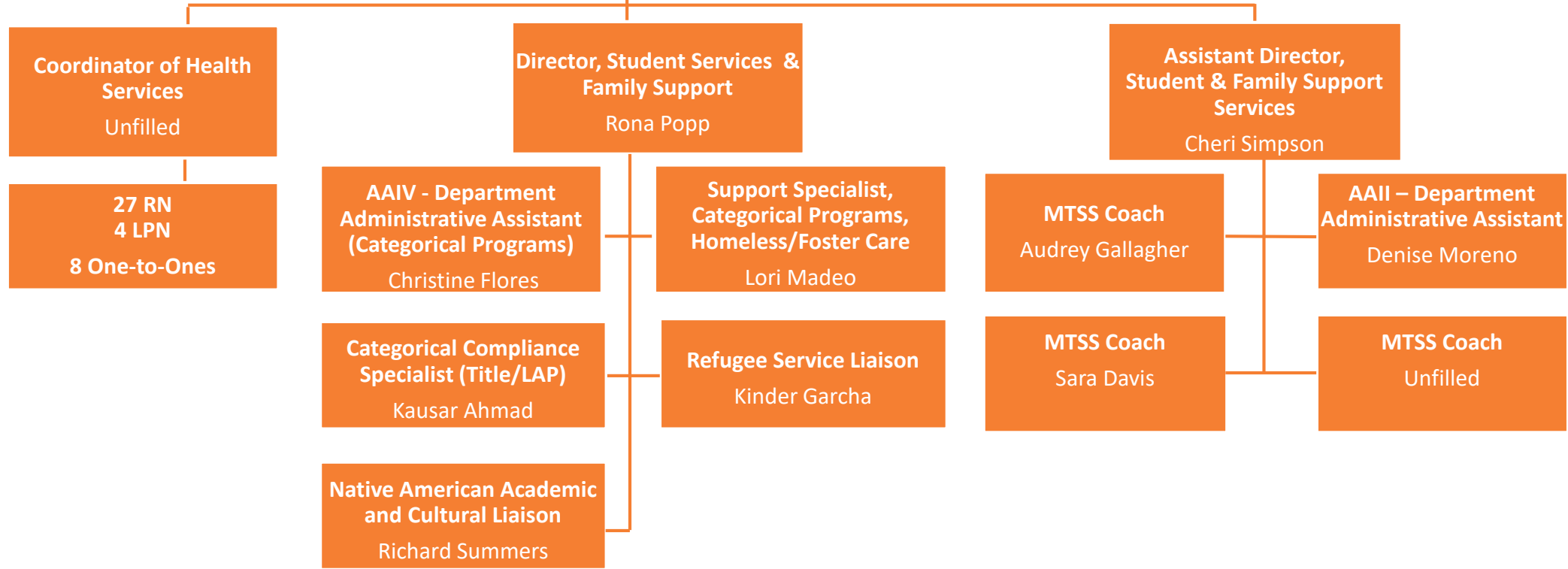
<b>Kent-Meridian High</b>	<b>KM</b>
Mill Creek Middle	MC
Daniel Elementary	DE
East Hill Elementary	EH
Kent Elementary	KE
Martin Sortun Elementary	MS
Meadow Ridge Elementary	MR
Meridian Elementary	ME
Millennium Elementary	ML
Neely-O'Brien Elementary	NO
Pine Tree Elementary	PT
Scenic Hill Elementary	SH

<b>Kentridge High</b>	<b>KR</b>
Meeker Middle	MK
Northwood Middle	NW
Carriage Crest Elementary	CC
Emerald Park Elementary	EP
Fairwood Elementary	FW
Glenridge Elementary	GR
Lake Youngs Elementary	LY
Panther Lake Elementary	PL
Park Orchard Elementary	PO
Ridgewood Elementary	RW
Soos Creek Elementary	SC
Springbrook Elementary	SB
Sunrise Elementary	SR

<b>Kentlake High</b>	<b>KL</b>
<b>Kentwood High</b>	<b>KW</b>
Cedar Heights Middle	CH
Mattson Middle	MA
Meridian Middle	MM (MJ)
Cedar Valley Elementary	CV
Covington Elementary	CO
Crestwood Elementary	CW
Grasslake Elementary	GL
Horizon Elementary	HE
Jenkins Creek Elementary	JC
Sawyer Woods Elementary	SW
iGrad	IGRAD
Kent Mountain View Academy	KMVA
Kent Phoenix Academy	KPA
Regional Justice Center	RJC









2



**Chief School Operations & Academic Support Officer**  
Israel Vela

**Safety Operations Supervisor**  
Tim Kovich

**Executive Director, Student & Family Support Services**  
Randy Heath

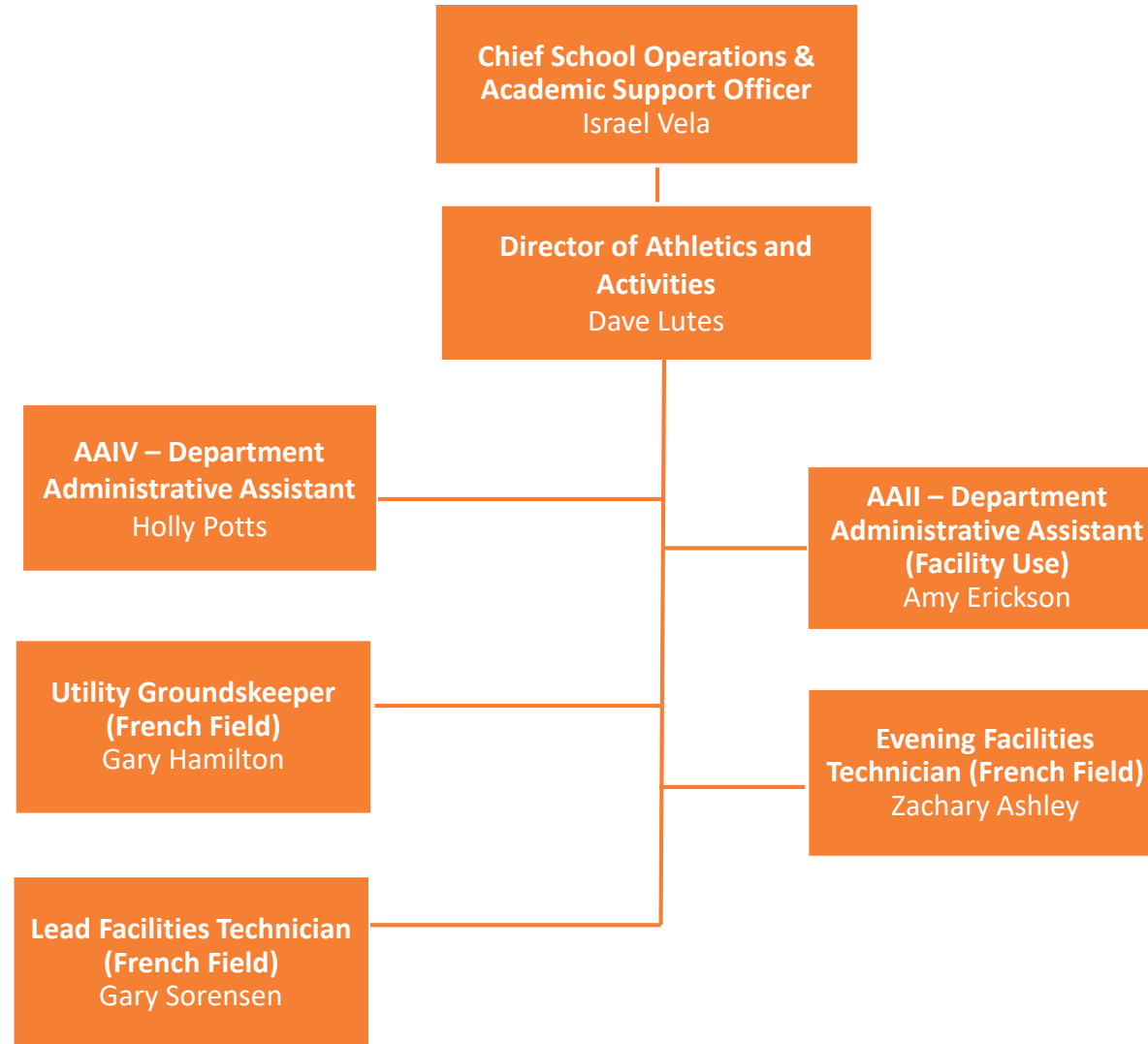
**AAIV - Administrative Assistant**  
Kimberly Webb

**Kent Police Liaison**  
Commander Andrew Grove

**Security Application Support Engineer**  
Eric Maurer

4 School Resource Officers  
18 Safety Officers







**Chief School Operations & Academic Support Officer**  
Israel Vela

**Director, Transportation**  
Justin Dennison

**Assistant Director, Transportation**  
Doreen Stewart

**Supervisor II, Transportation Shop**  
Blaine Sells

**1-lead mechanic**  
**6-mechanics**  
**1-service person**

**Kelly Bissell**  
TR Routing Specialist I  
Gen Ed, MKV, Foster Router  
12-month

**Kim Lamb**  
TR Specialist I  
Special Ed Router  
12-month

**TR Specialist I  
Driver Trainer**  
Tim Lash

**Dispatch**  
Christy Malgarin

**AAV Office Manager**  
Carol Sells

**Lisa Wallis**  
Transportation Dispatch  
Gen Ed, MKV, Foster Router  
10-month

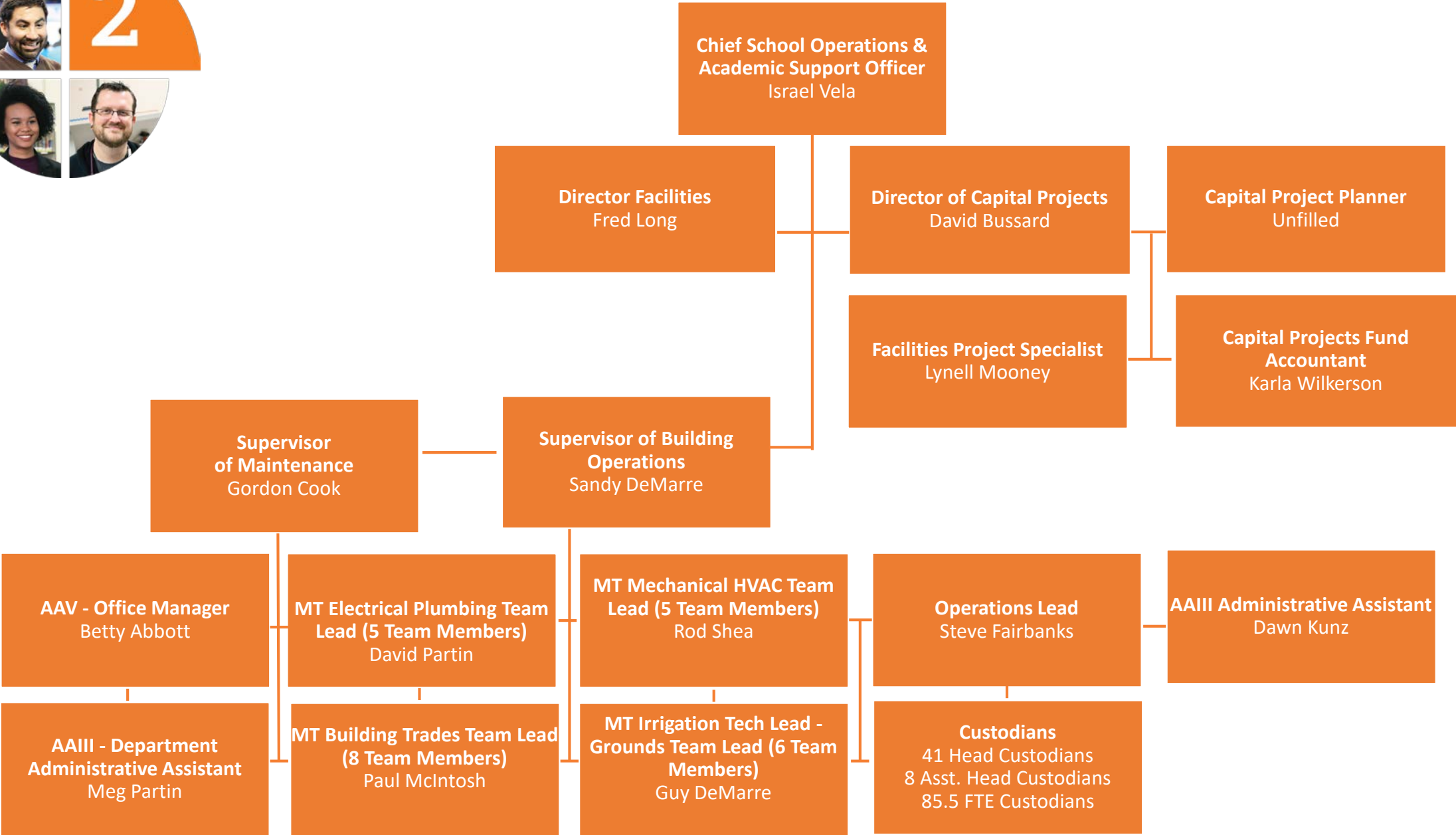
38 Special Ed drivers

**AAIV Department  
Admin. Assistant**  
Mary Ardissonne

91 regular route drivers

**AAII Department  
Admin. Assistant**  
Marie Rivera

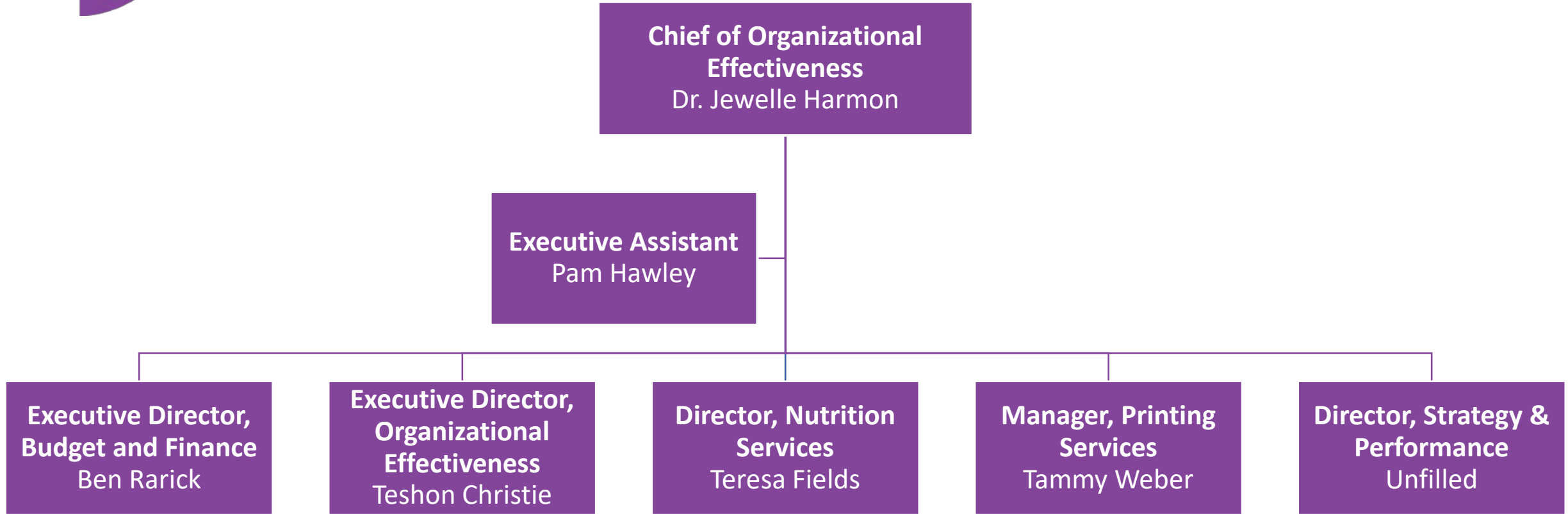




# Goal 3 ***CREATE***

Create **effective organizational systems** that reinforce equity and excellence.





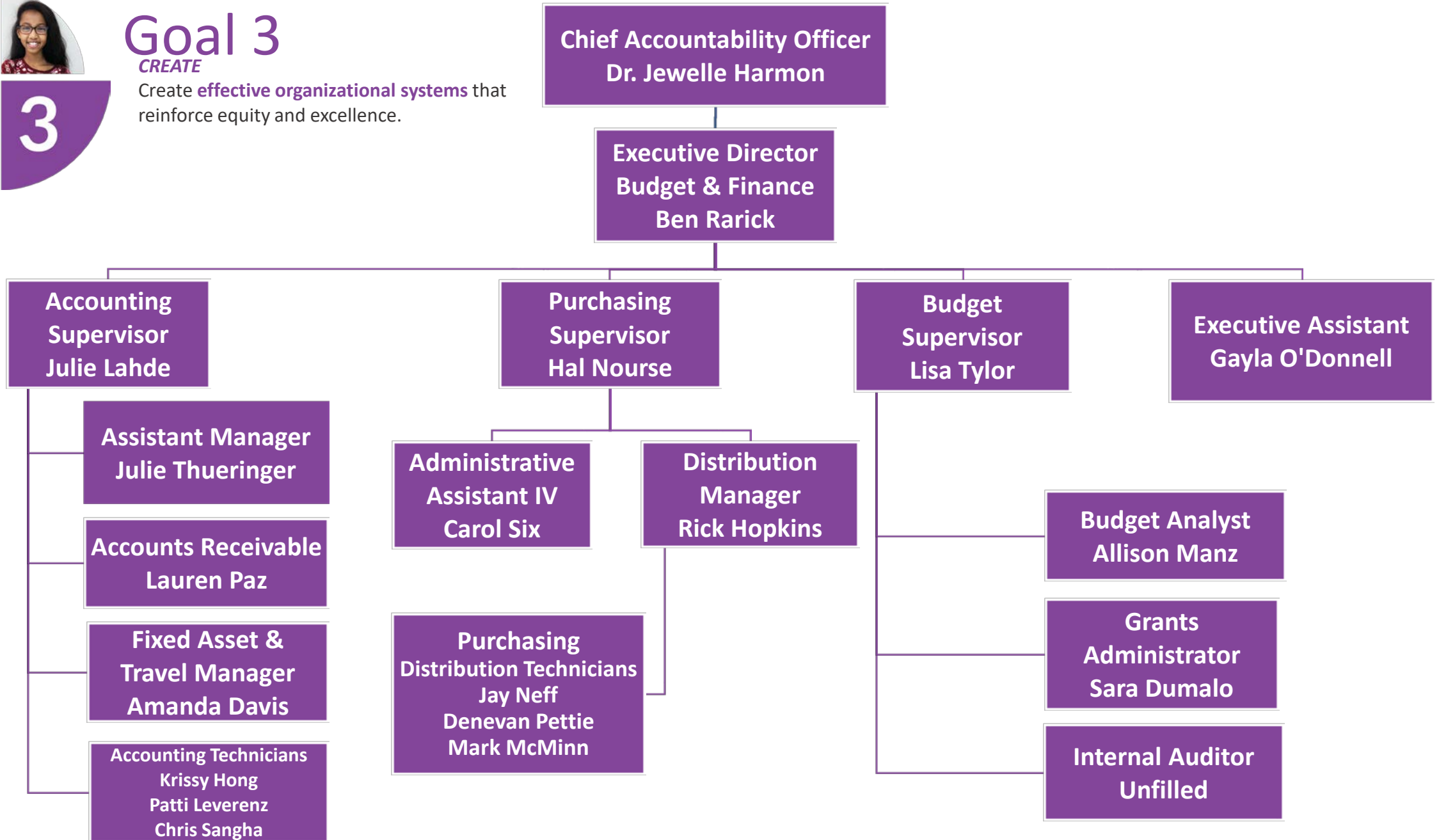


# Goal 3

*CREATE*

Create **effective organizational systems** that reinforce equity and excellence.

# 3



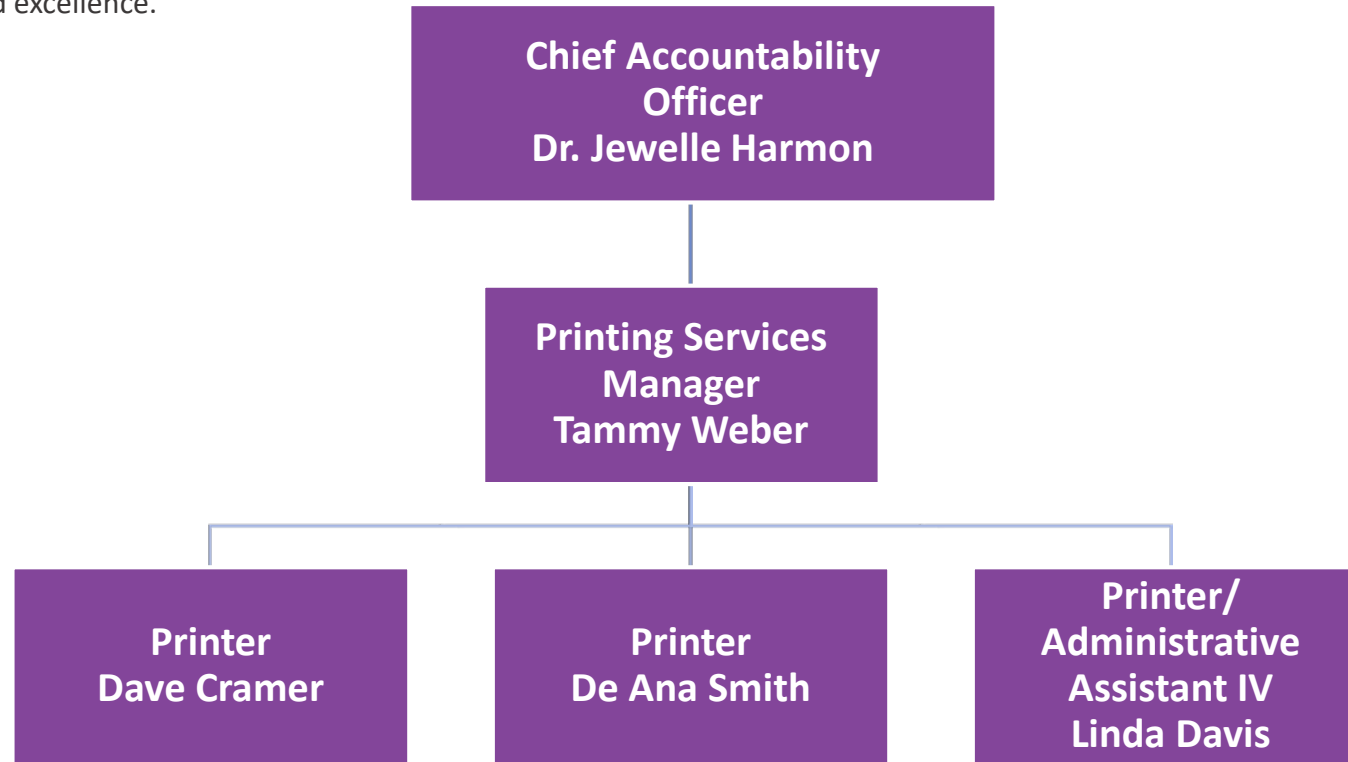




# Goal 3

*CREATE*

Create **effective organizational systems** that reinforce equity and excellence.

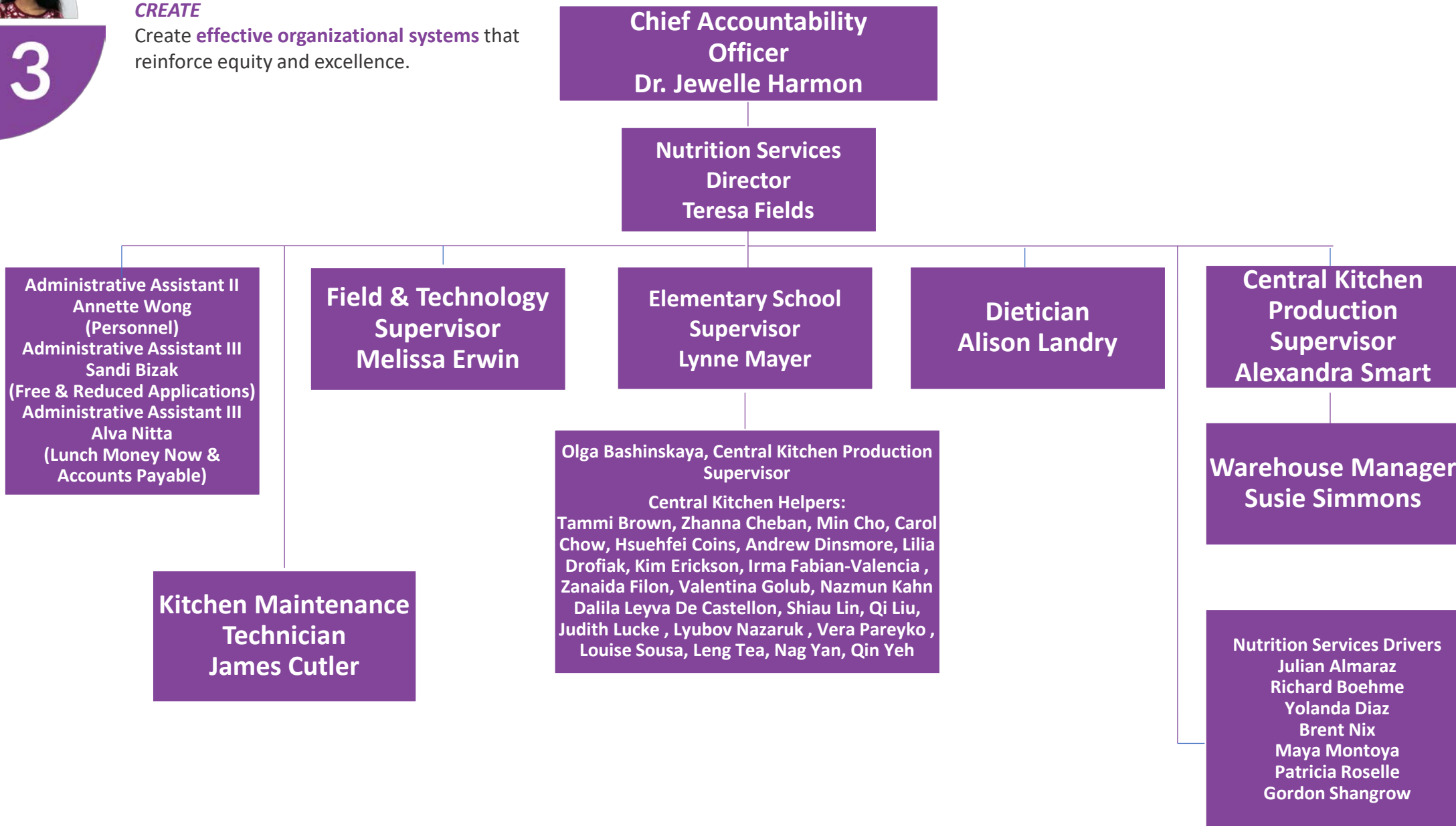




# Goal 3

**CREATE**

Create **effective organizational systems** that reinforce equity and excellence.





# Goal 3

*CREATE*

Create **effective organizational systems** that reinforce equity and excellence.

**Chief Accountability Officer  
Dr. Jewelle Harmon**

**Executive Director,  
Organizational Effectiveness  
Teshon Christie**

**Executive Assistant  
Traci Hollingsworth**

**Director, Research  
Ashley Birkeland**

**Director, Assessment  
Telisa Reed**

**Senior Project  
Manager  
Joelle Bejarano**

**Director, IT Operations  
Tom Metcalf**

**Assistant Director,  
Data Services & Support  
Michelle Chinn**

**Assistant Director,  
Digital Learning  
Jeff Thungc**



# Goal 3

*CREATE*

Create **effective organizational systems** that reinforce equity and excellence.

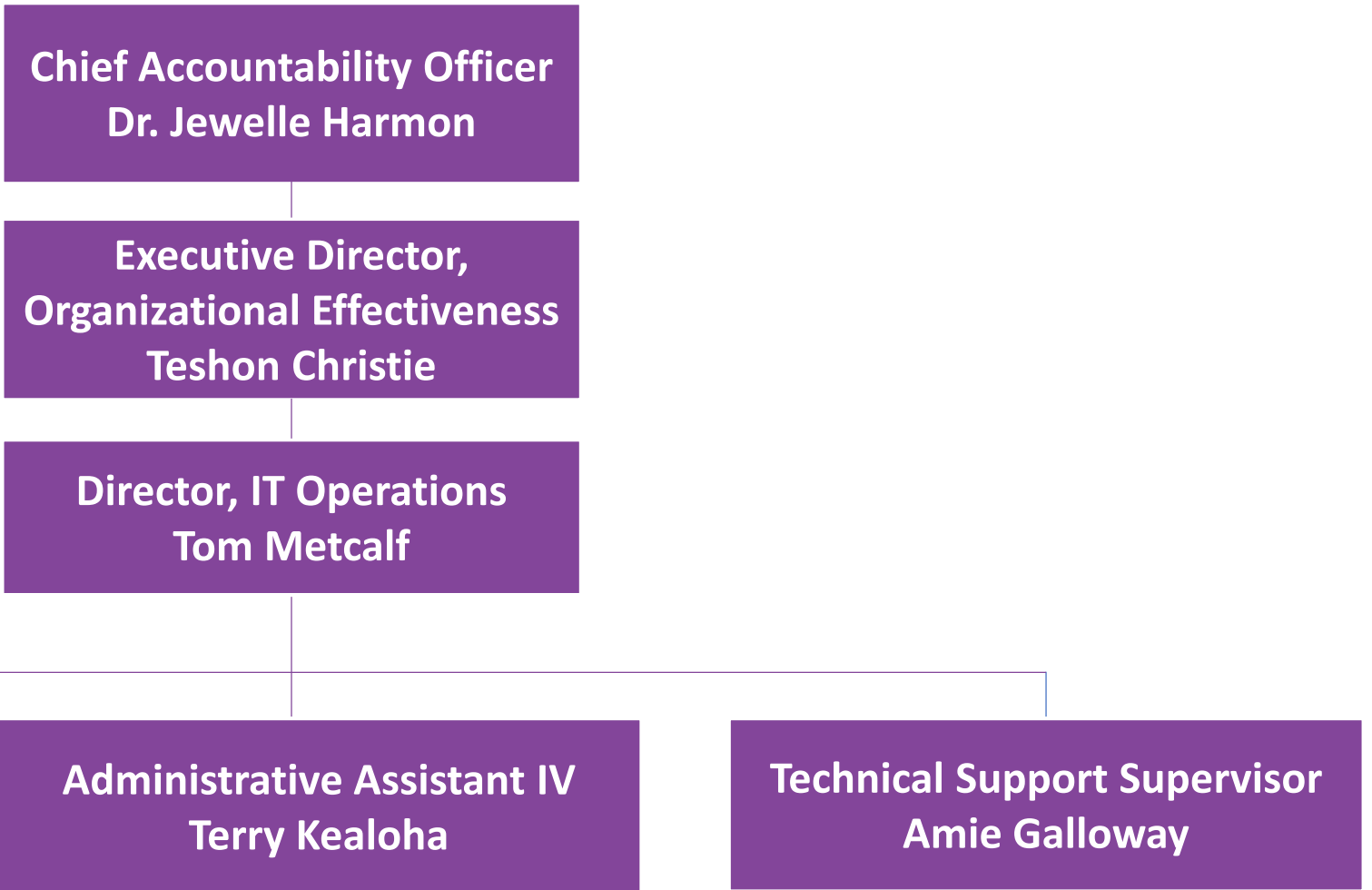




# Goal 3

**CREATE**

Create **effective organizational systems** that reinforce equity and excellence.

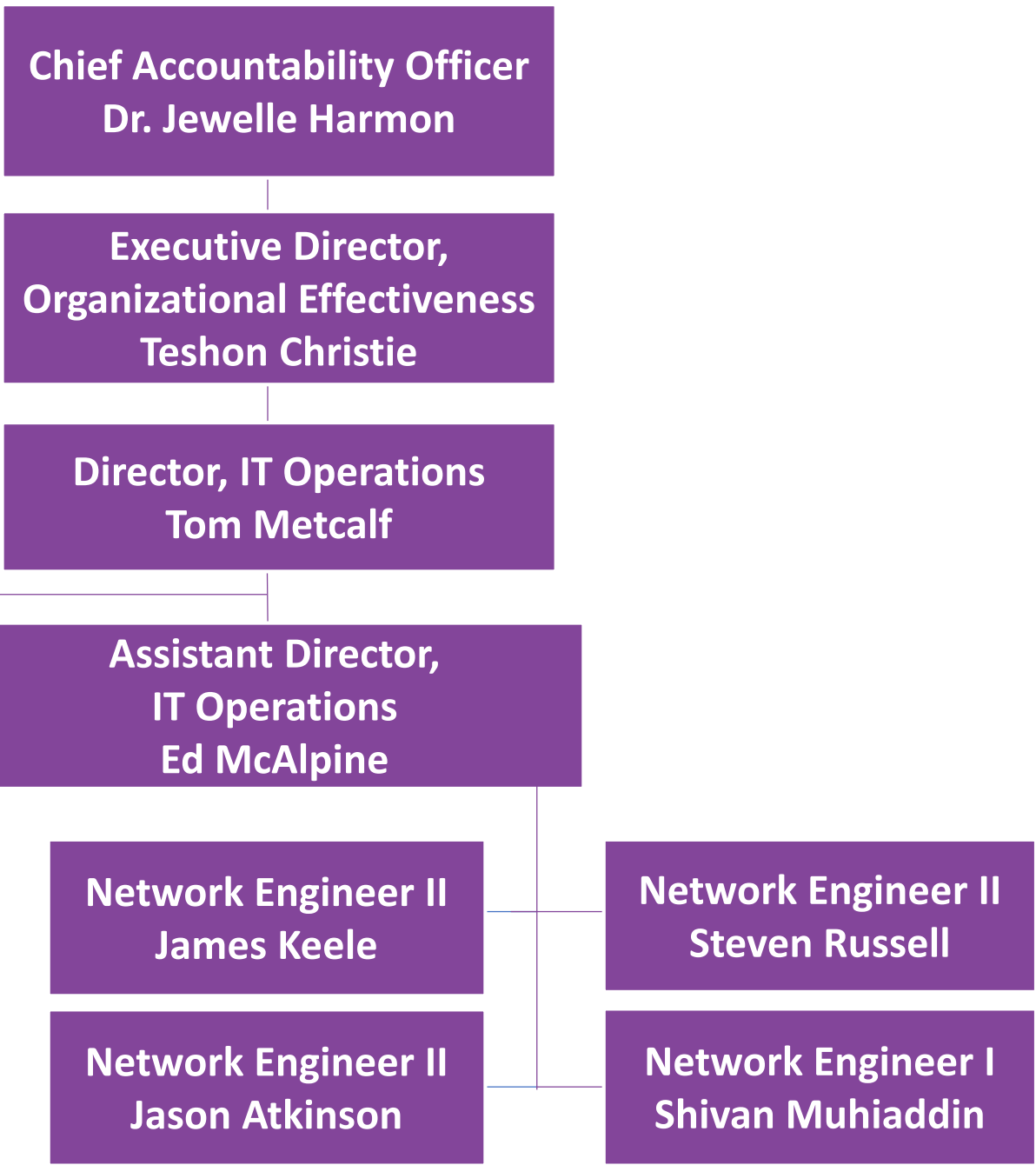




# Goal 3

**CREATE**

Create **effective organizational systems** that reinforce equity and excellence.



**Chief Accountability Officer**  
**Dr. Jewelle Harmon**

**Executive Director,  
Organizational Effectiveness**  
**Teshon Christie**

**Director, IT Operations**  
**Tom Metcalf**

**Administrative Assistant IV**  
**Terry Kealoha**

**Assistant Director,  
IT Operations**  
**Ed McAlpine**

**System Administrator Lead**  
**Mike Shull**

**System Administrator III**  
**Jeremy Johnson**

**Network Engineer II**  
**James Keele**

**Network Engineer II**  
**Jason Atkinson**

**Network Engineer II**  
**Steven Russell**

**Network Engineer I**  
**Shivan Muhiaddin**

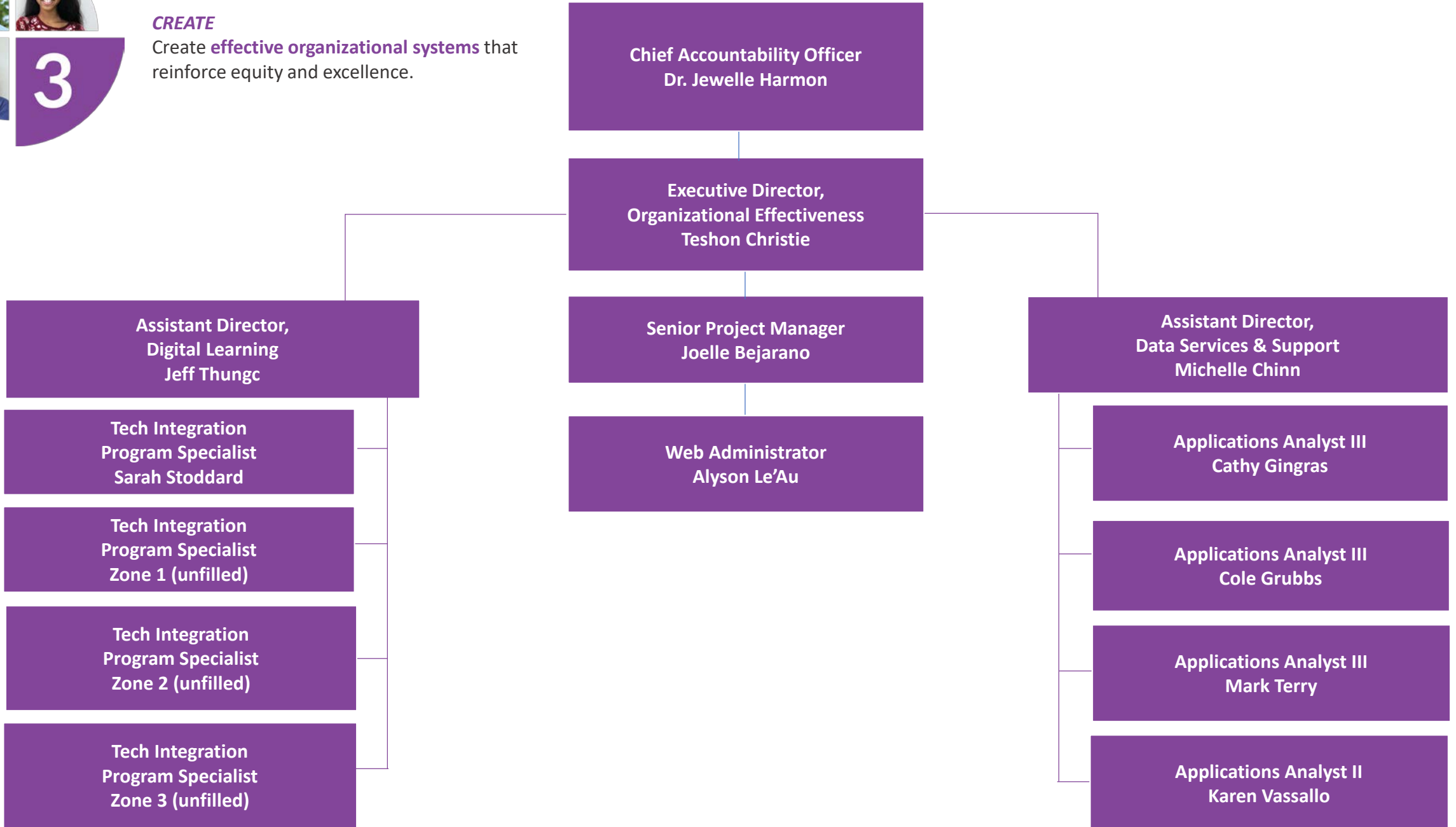


Goal 3

**CREATE**

Create **effective organizational systems** that reinforce equity and excellence.

3





**Goal 3**

**CREATE**

**Create effective organizational systems that reinforce equity and excellence.**

**3**

**Administrative Assistant IV  
Lisa Greer**

**CSC Lead  
Tyler Boaz**

**Help Desk Specialist II  
Alyssa Francis**

**Help Desk Specialist II  
Kathy Hill**

**Chief Accountability Officer  
Dr. Jewelle Harmon**

**Executive Director,  
Organizational Effectiveness  
Teshon Christie**

**Director, IT Operations  
Tom Metcalf**

**Technical Support Supervisor  
Amie Galloway**

**Application Tech Specialist II  
Gwen Nanninga**

**Tech Support Specialist III  
Zach Otto**

**Tech Support Specialist III  
Erik Earles**

**Tech Support Specialist II  
Brian Smith**

**Tech Support Specialist II  
Hunter Patterson**

**Tech Support Specialist Lead  
Travis Haas**

**Tech Support Specialist I  
Lane Kuxhausen**

**Tech Support Specialist I  
Vince Santamaria**

**Tech Support Specialist I  
Nathan Crawford**

**Tech Support Specialist I  
Erica Stenseth**

**Tech Support Specialist I (KW)  
David Morrison**

**Tech Support Specialist I (KR)  
Ben Simpson**

**Tech Support Specialist I (KM)  
Max Maxwell**

**Tech Support Specialist I (KL)  
Zackary Jones**

**Technology Support Interns (7)**





## Goal 4 ***DEVELOP***

Recruit, hire, develop, and retain a diverse and **premier workforce.**

