

Kent School District

Leadership Organization Chart

December 2023





Superintendent

Israel Vela

Deputy

Superintendent

Dr. Wade Barringer

Operations

Dr. Wade Barringer

Athletics & Activities,
Capital Projects,
Environmental Services,
Facilities,
Maintenance,
Safety Services,
Technology Operations
& Support Services,
Transportation Services,
Warehouse &
Distribution Services

Learning Supports

Randy Heath

Accountability & Strategy,
Assessment, Advanced
Learning, CTE,
Title 1 & LAP, Coordinated
Health Services, Data
Services & Support,
Inclusive Education,
Multilingual
Education, Performance
Outcomes & Data,
Research & Evaluation,
Strategic Initiatives &
Program Operations,
Student & Family Support
Services, Student
Supports, Student
Success

**Teaching &
Learning**

Dr. Rebekah Kim

Elementary Teaching
& Learning,
Curriculum &
Instruction,
Digital Learning,
Learning
Improvement,
Professional
Development
Operations,
Secondary Teaching
& Learning
Teacher & Leadership
Development

Finance

Ben Rarick

Accounting,
Budget & Finance,
Business Services,
Risk Management,
Nutrition Services,
Payroll,
Procurement

Human Resources

Daman Hunter

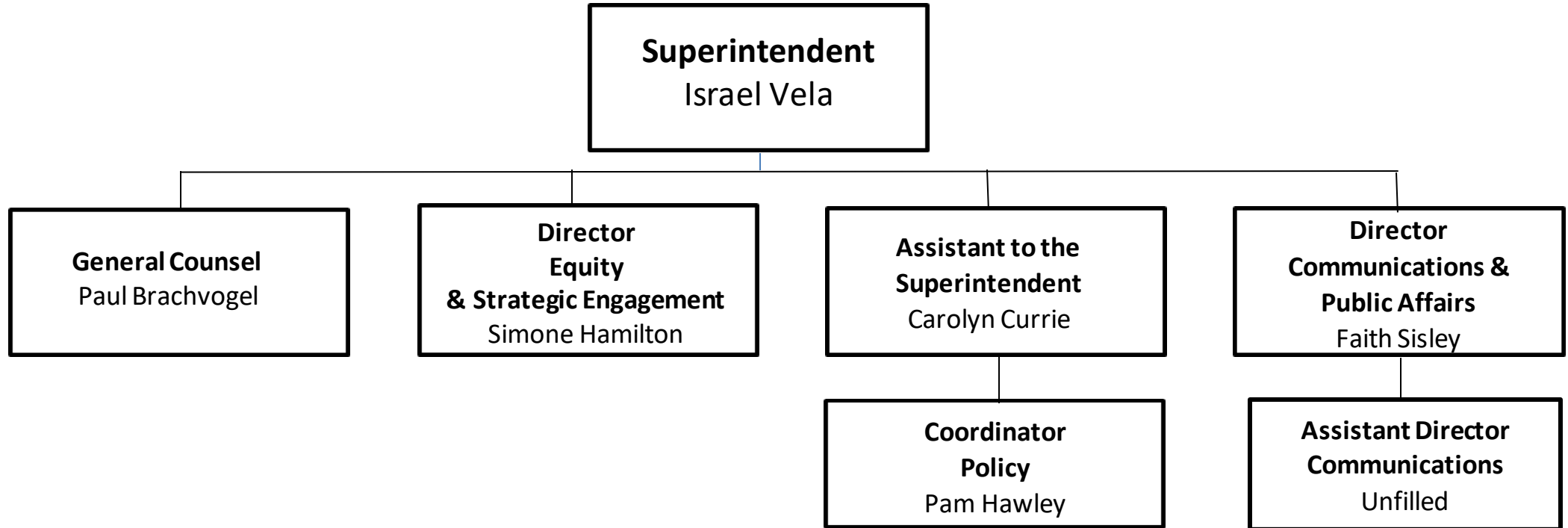
Benefits,
Employment
Support,
Labor Relations,
HR Operations,
Substitute Services





Superintendent's Office

**KENT
SCHOOL
DISTRICT**

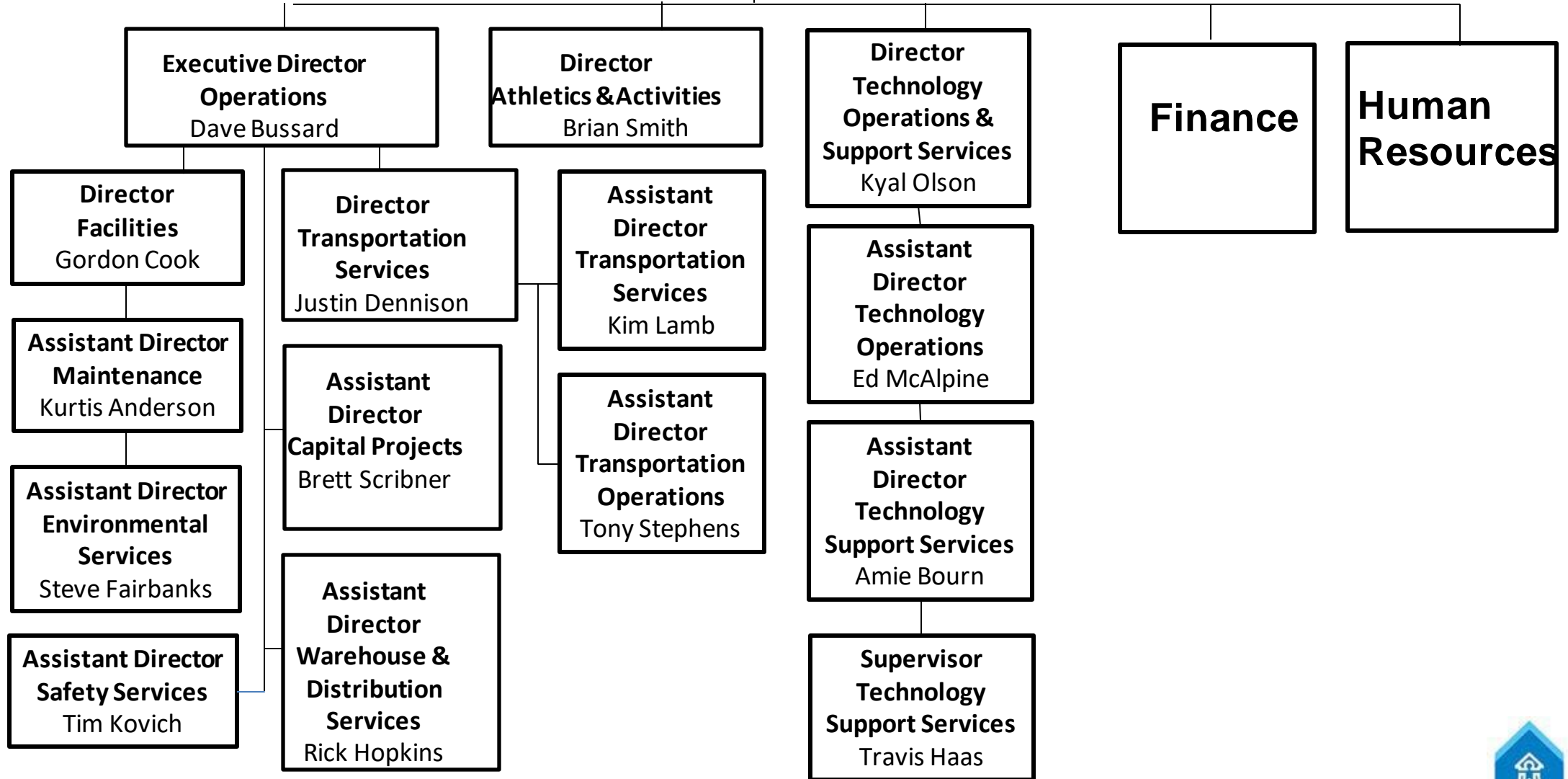




Operations

Deputy Superintendent
Dr. Wade Barringer

Communities





Learning Supports

KENT SCHOOL DISTRICT

**Associate Superintendent
Learning Supports**
Randy Heath

**Executive Director
Community Partnerships**
Carol Cleveland

**Senior Executive Director
Accountability & Strategy**
Spencer Pan

**Executive Director
Student Success**
Susie Whitlock

**Assistant Director
Learning Supports**
Rochelle Seaton
Garcia

**Director
Career & Technical
Education**
Lori Paxton

**Assistant Director
Career & Technical
Education**
Brian Reckling

**Director
Inclusive Education**
Jonathan Robinson

**Assistant Director
Inclusive Education**
Andra Maughan

**Assistant Director
Inclusive Education**
James Alyson

**Assistant Director
Inclusive Education**
Beth Stoughton

**Assistant Director
Inclusive Education**
Dr. Haley Brown

**Director
Strategic Initiatives**
Joelle Bejarano

**Assistant Director
Program Operations**
Paul Rogers

**Assistant Director
Learning Supports**
Amrinder Bains

**Executive Director
Performance
Outcomes & Data**
Dr. Ashley Birkeland

**Director
Assessment**
Charity Jensen

**Assistant Director
Assessment**
Jennifer Antrobus

**Assistant Director
Research &
Evaluation**
Elizabeth Barker

**Assistant Director
Data Services &
Support**
Michelle Chinn

**Director
Coordinated
Health
Services**
Lyndy Baron

**Director
Student &
Family
Support
Services**
Cheri
Simpson





**KENT
SCHOOL
DISTRICT**

Teaching & Learning

**Associate
Superintendent
Teaching & Learning
Dr. Rebekah Kim**

**Executive Director
Elementary Teaching &
Learning
Cynthia Green**

**Executive Director
Secondary Teaching &
Learning
Dr. Christine Corbley**

**Office
of
Learning Improvement**

**Director
Multilingual
Education
Angelie
Dumovic**

**Assistant Director
Teaching & Learning
Marcie Baril**

**Coordinator
ELA/SS
Amy Abrams**

**Assistant Director
Teaching & Learning
Dr. Chris White**

**Director
Teacher &
Leadership
Development
Cathy Lendosky**

**Executive Director
Dr. Christine Avery**

**Assistant
Director
Multilingual
Education
Dawn Brastad**

**Coordinator
ELA/SS
Karen Stevens**

**Assistant Director
Digital Learning
Melissa Benner**

**Executive Director
Dr. Kathy Emerick**

**Coordinator
Science
Jon Rismiller**

**Assistant Director
Professional
Development
Operations
Kim Cushman**

**Executive Director
Darice Johnson**

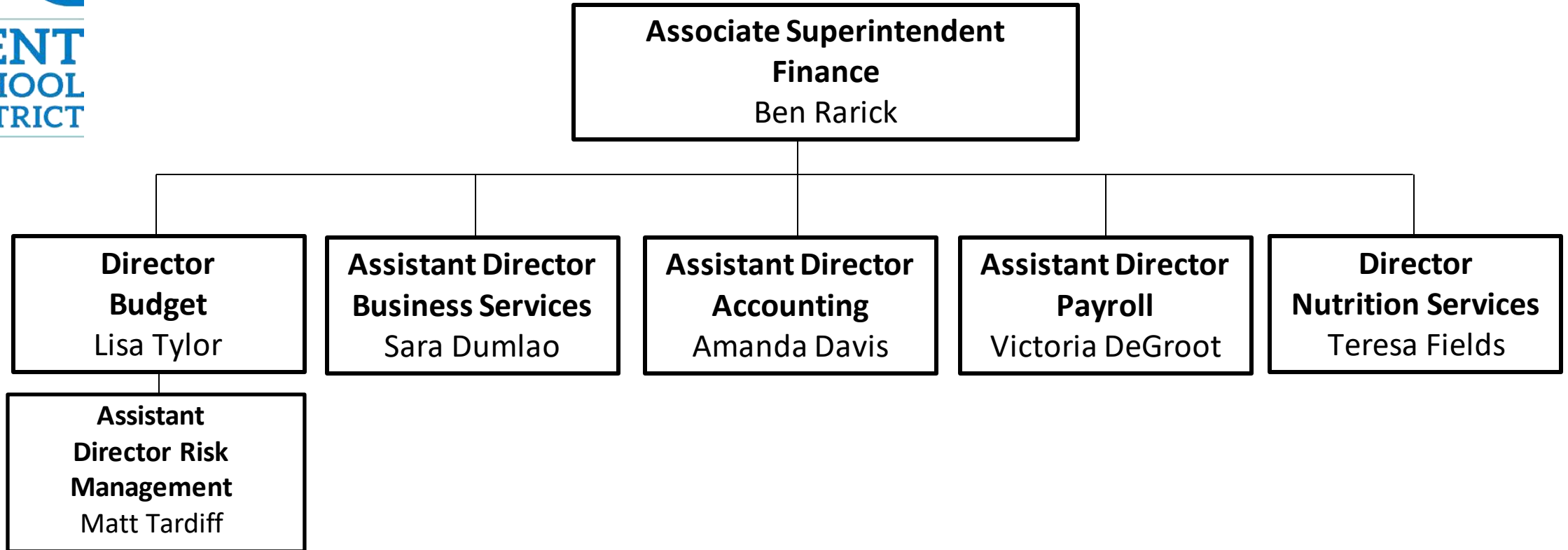
**Executive Director
Jim Schiechl**





Finance

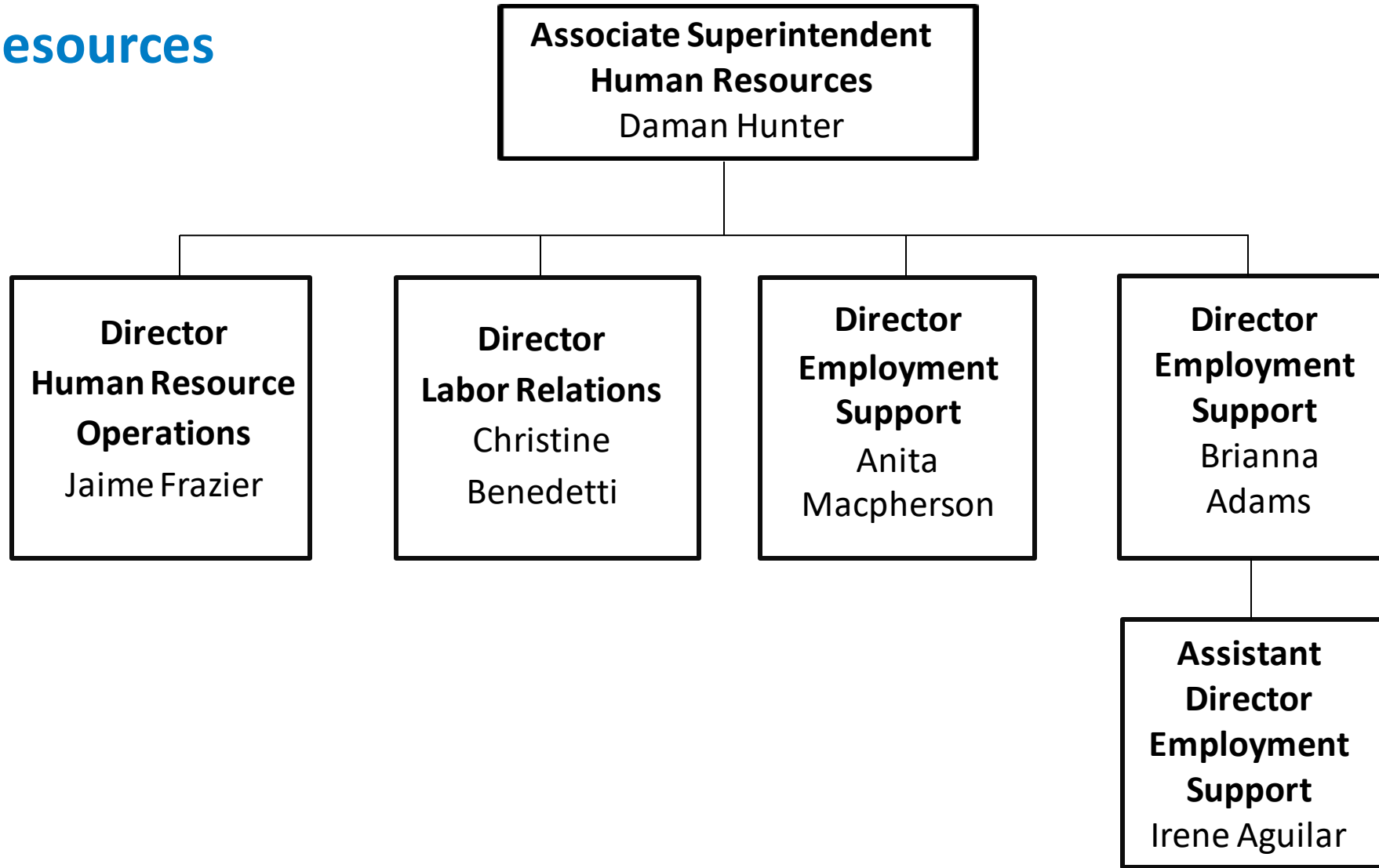
**KENT
SCHOOL
DISTRICT**





Human Resources

**KENT
SCHOOL
DISTRICT**





Thank you

#startstrong
#staystrong
#finishstrong

*Successfully Preparing All
Students for Their Futures*