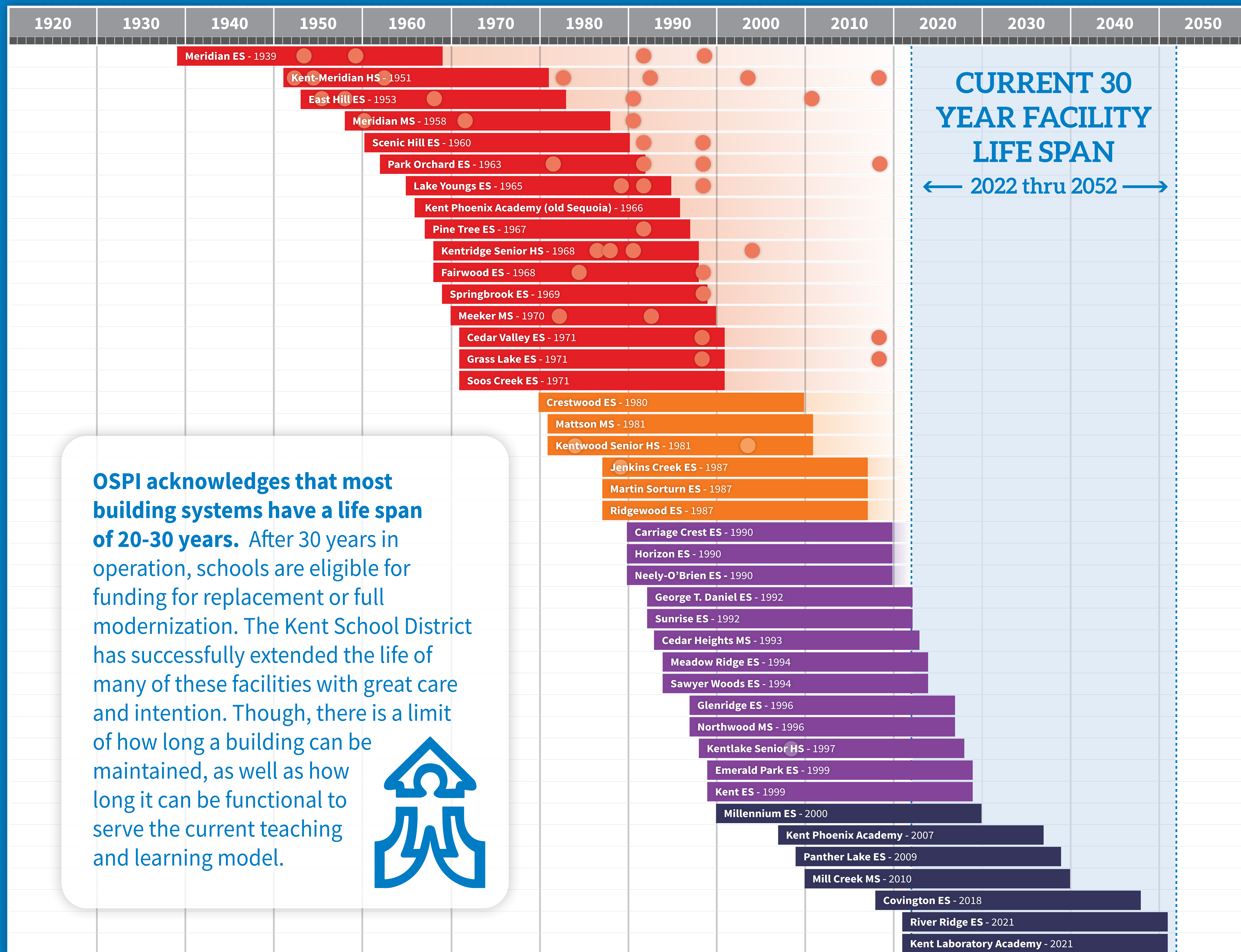


# SCHOOL FACILITY TIMELINE & ANTICIPATED 30 YEAR LIFE SPAN



**OSPI acknowledges that most building systems have a life span of 20-30 years.** After 30 years in operation, schools are eligible for funding for replacement or full modernization. The Kent School District has successfully extended the life of many of these facilities with great care and intention. Though, there is a limit of how long a building can be maintained, as well as how long it can be functional to serve the current teaching and learning model.



MAINTAINED & MINIMAL MODERNIZATION | 1980s – GROWTH PROJECTS | 1990s – GROWTH PROJECTS | 2000s – GROWTH PROJECTS

COLORED CIRCLES DESIGNATE YEARS OF MAJOR MODERNIZATIONS AND/OR ADDITIONS