



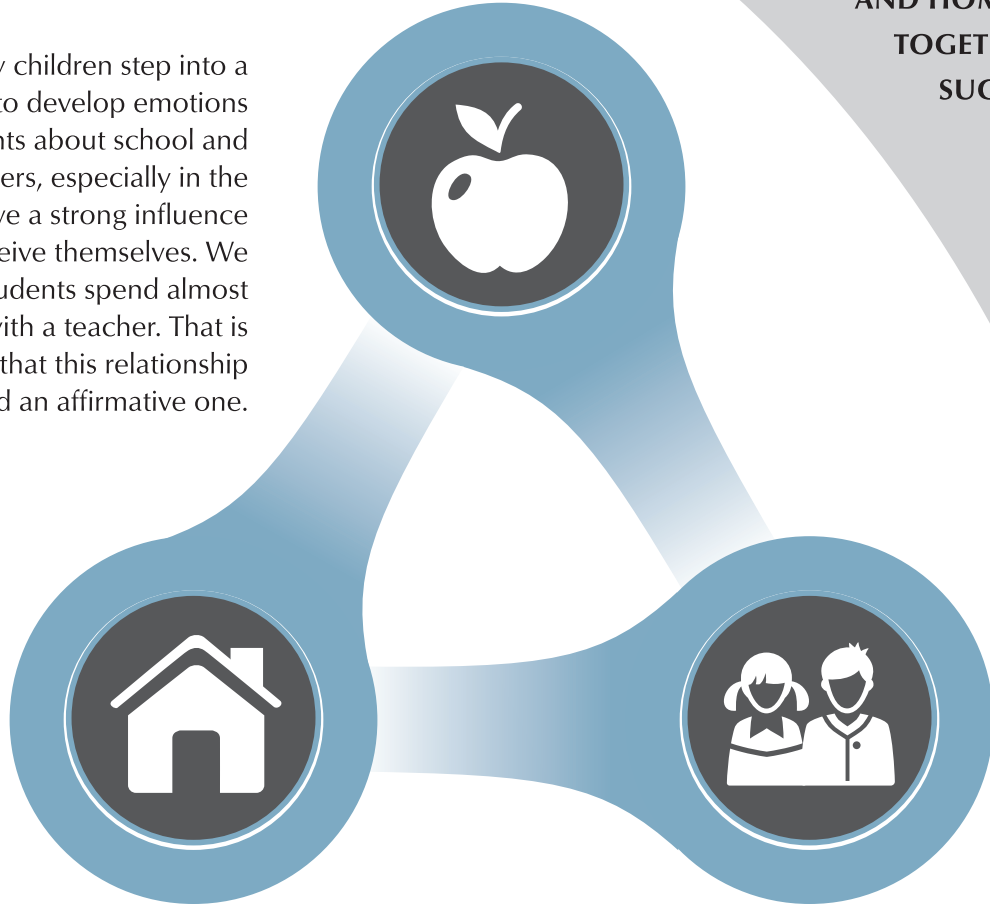
Student Success Model

THE THREE STAKEHOLDERS SHOWN BELOW REPRESENT THE THREE COMING TOGETHER TO SUPPORT A CHILD IN SCHOOL.

THE IDEA IS THAT IT TAKES COMMUNITY, SCHOOL, AND HOME TO WORK TOGETHER FOR THE SUCCESS OF THE STUDENT.

THE SCHOOL

From the very first day children step into a classroom, they begin to develop emotions and form thoughts about school and education. Teachers, especially in the elementary grades, have a strong influence on the way children perceive themselves. We must keep in mind that students spend almost six consecutive hours with a teacher. That is why, it is very important that this relationship be a positive and an affirmative one.



THE HOME

The family plays an important role in the development of a child's self-esteem. Those who receive positive feedback from their parents learn to appreciate themselves. Their parents and family members become role models and guides that help them foster self-confidence.

The family is very important in the academic success that children will have, because it is in the home that they learn how to approach learning and develop study habits and work ethics. Also, the formative years of children's lives are at home. If we as parents support their education, they will learn to see school and education as something important in their lives.

THE COMMUNITY

What takes place in the community in which we live in, affects the way our children view their education. They can encounter positive or negative experiences in their community, just as in the school or at home. If they are exposed to healthy activities which promote education, such as going to libraries, museums, sports clubs, and baseball leagues, it is more likely that they will find positive role models in these settings. On the contrary, if they are exposed to gangs, drugs, violence, and other negative factors, this may harmfully influence their lives forever.