

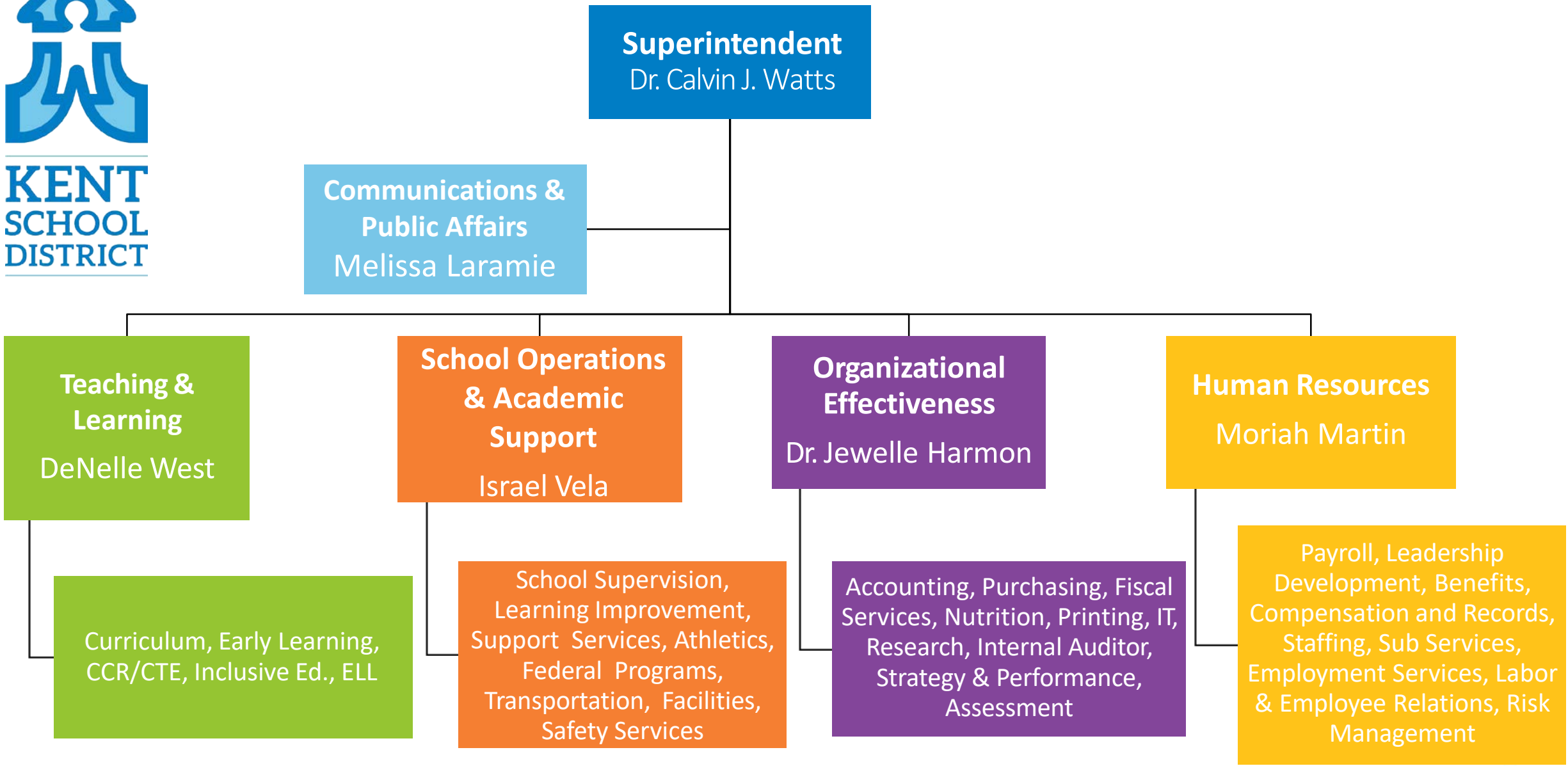


# Kent School District 2.0

OCTOBER 2018



**KENT  
SCHOOL  
DISTRICT**





**Superintendent**  
Dr. Calvin J. Watts

**Executive Assistant**  
Karyn Howley

**Director, Communications & Public Affairs**  
Melissa Laramie

**Communications Operational Lead**  
Faith Sisley

**Communications Specialist**  
Whitley Horejsi

**Multimedia Communications Specialist**  
Kasey High

**Graphic Designer**  
Matt Anderson

**Communications Assistant**  
Rhiannon Berg

1



## Goal 1 ***PREPARE***

Prepare all students to be **college and career ready** by raising the academic and social learning bar and closing the gaps to student achievement and college completion.



**Chief Learning Officer**  
DeNelle West

**Executive Assistant**  
Sam Maffei

**Director, Teaching & Learning**  
Christine Corbley

**Executive Director, Learning Supports**  
Jennifer Jones

**Executive Assistant**  
Kimberly Wigginton

**Admin. Assistant**  
Annette Williams

**Coordinator, Early Learning**  
Christine Bilka

**Coordinators**  
Amy Abrams  
Marcie Baril  
Jon Rismiller  
Karen Stevens  
Christopher White

**Program Specialists**  
Kyung Chung- Math  
Nicole Kieffer-Math  
Mike Marshall- ELA/SS  
Colleen Oliver- HiCap  
Annette Venegas- Science  
Charlene Vermilion-ELA/SS

**Science Kit Inv. Manager**  
Amy Spies

**Admin. Assistant**  
Brandi Pepperdine

**Director, Inclusive Education**  
Spencer Pan

**Budgeting & Staffing Specialist**  
Kris Gregoire

**IE Assistant**  
Rebecca Ramos

**Beh. Int. Team (BCBA & Specialists)**  
Pearl Chan, Behavior  
Beth Stoughton, BCBA  
Unfilled, BCBA

**Intervention Team Assistants**  
Heather Matthews  
Theresa Berger  
Michael Williams  
Dameon Ellis  
Unfilled

**Director, Career & Technical Education**  
Lori Paxton

**Program Specialists**  
DeAnne Dige  
Jill Hoepfinger  
Bryan Reckling

**Work Based Learning Specialist**  
Melissa McEaney-Wassman

**Admin. Assistants**  
Melanie Self  
Lynda Zeiler

**Director, Multilingual Education**  
Nina "Will" Williams

**ELL & Dual Language Program Specialists**  
Jennifer Antrobus  
Narine Balayan  
Lizeth Godsey

**Admin. Assistants**  
Heather Braun  
Rochelle Kitts

**Program Specialists**  
Unfilled, Compliance  
Lynette Vogeley, ECSE

**Transition Coordinator, TOP**  
Susan Whitehall

**Admin. Assistant**  
Joni Anderson

**Assistant Directors, IE**  
Mike Williams  
Jonathan Robinson

**Program Specialists**  
Noreen Bucknum  
Rachel Grant  
Erica Eller

**Admin. Assistants**  
Angela Dodge  
Kandace Hodgson  
Christie Six  
Jessica Brown  
Gina Campbell

## Goal 2 ***ENGAGE***

Engage parents, students, staff, and community in **two-way communication** focused on equity and excellence.





**Chief School Operations & Academic Support Officer**

Israel Vela

**Executive Directors of Learning Improvement**

Barbara L. Harris, Dr. Wade Barringer, Dr. Marion Smith Jr.

**Executive Assistant**

Carolyn Currie

**Executive Director, Student & Family Support Services**

Randy Heath

**Director, Student & Family Support Services**

Rona Popp

**Assistant Director, Student & Family Support Services**

Cheri Simpson

**Coordinator, Health Services**

Dr. Mary Newell

**Safety Operations Supervisor**

Tim Kovich

**Director, Athletics**

Dave Lutes

**Director, Transportation**

Justin Dennison

**Assistant Director, Transportation**

Doreen Stewart

**Supervisor II, Transportation Services**

Blaine Sells

**Director, Facilities**

Fred Long

**Supervisor II, Custodians**

Sandra DeMarre

**Director, Capital Planning**

Dave Bussard

**Supervisor II, Maintenance**

Gordon Cook





**Chief School Operations & Academic Support Officer**  
Israel Vela

**Executive Assistant to EDLIs**  
Bree Eggleston

**Executive Director of Learning Improvement**  
Barbara L. Harris

**Executive Director of Learning Improvement**  
Dr. Marion Smith, Jr.

**Executive Director of Learning Improvement**  
Dr. Wade Barringer

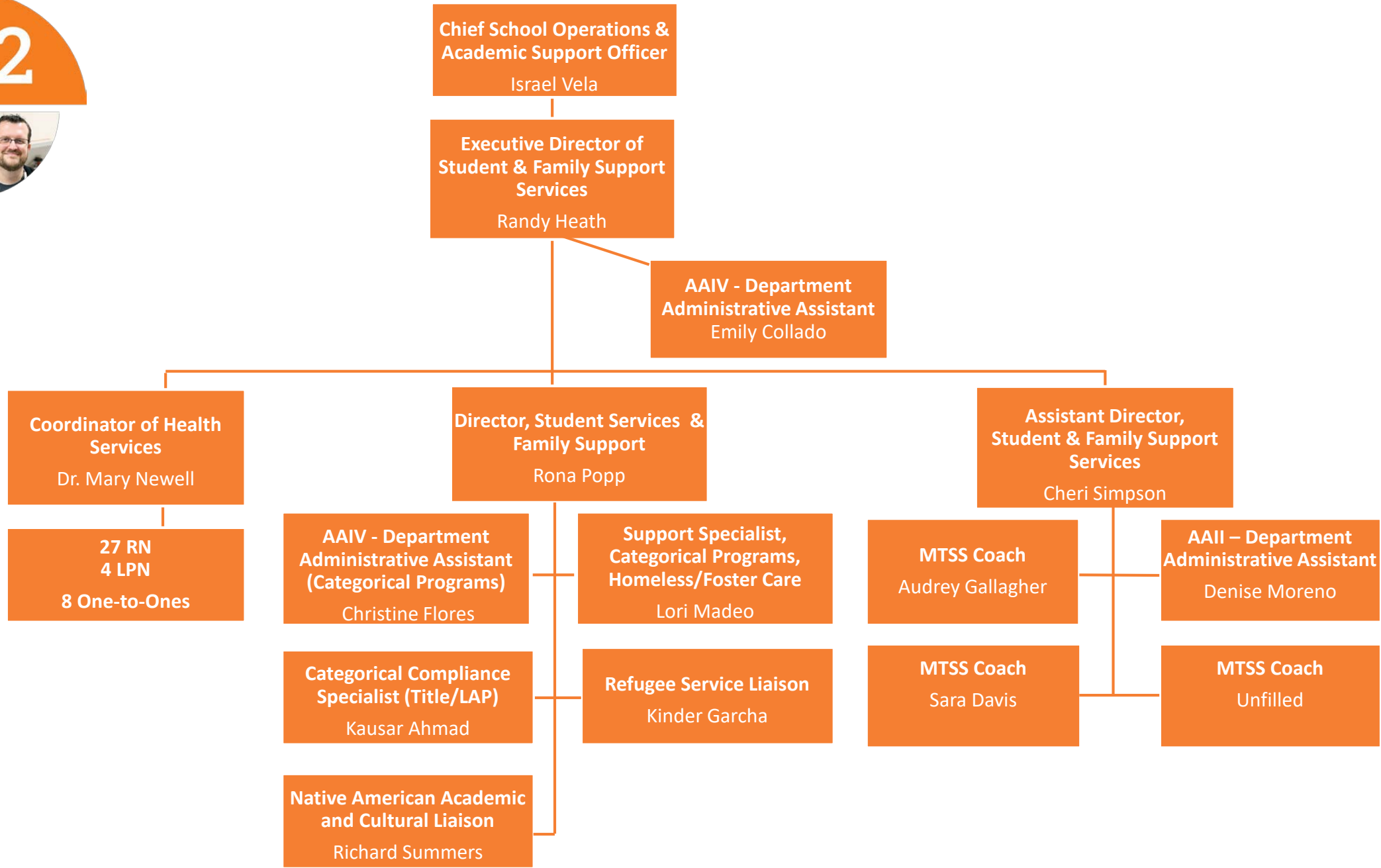
<b>Kent-Meridian High</b>	<b>KM</b>
Mill Creek Middle	MC
Daniel Elementary	DE
East Hill Elementary	EH
Kent Elementary	KE
Martin Sortun Elementary	MS
Meadow Ridge Elementary	MR
Meridian Elementary	ME
Millennium Elementary	ML
Neely-O'Brien Elementary	NO
Pine Tree Elementary	PT
Scenic Hill Elementary	SH

<b>Kentridge High</b>	<b>KR</b>
Meeker Middle	MK
Northwood Middle	NW
Carriage Crest Elementary	CC
Emerald Park Elementary	EP
Fairwood Elementary	FW
Glenridge Elementary	GR
Lake Youngs Elementary	LY
Panther Lake Elementary	PL
Park Orchard Elementary	PO
Ridgewood Elementary	RW
Soos Creek Elementary	SC
Springbrook Elementary	SB
Sunrise Elementary	SR

<b>Kentlake High</b>	<b>KL</b>
<b>Kentwood High</b>	<b>KW</b>
Cedar Heights Middle	CH
Mattson Middle	MA
Meridian Middle	MM (MJ)
Cedar Valley Elementary	CV
Covington Elementary	CO
Crestwood Elementary	CW
Grasslake Elementary	GL
Horizon Elementary	HE
Jenkins Creek Elementary	JC
Sawyer Woods Elementary	SW
iGrad	IGRAD
Kent Mountain View Academy	KMVA
Kent Phoenix Academy	KPA
Regional Justice Center	RJC









2



**Chief School Operations & Academic Support Officer**  
Israel Vela

**Safety Operations Supervisor**  
Tim Kovich

**Executive Director, Student & Family Support Services**  
Randy Heath

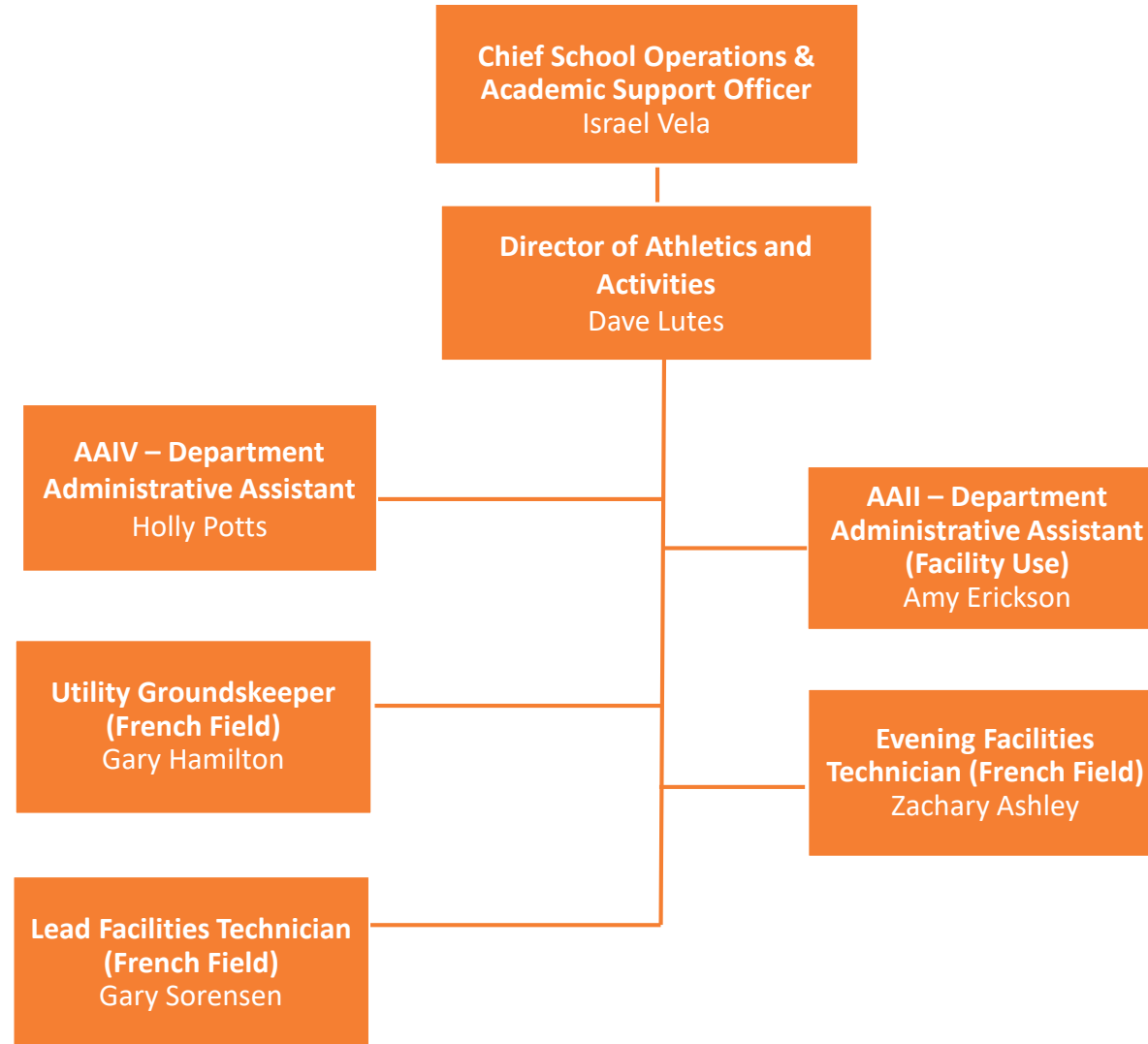
**AAIV - Administrative Assistant**  
Kimberly Webb

**Kent Police Liaison**  
Commander Andrew Grove

**Security Application Support Engineer**  
Eric Maurer

4 School Resource Officers  
18 Safety Officers







**Chief School Operations & Academic Support Officer**  
Israel Vela

**Director, Transportation**  
Justin Dennison

**Assistant Director, Transportation**  
Doreen Stewart

**Supervisor II, Transportation Shop**  
Blaine Sells

**1-lead mechanic**  
**6-mechanics**  
**1-service person**

**Kelly Bissell**  
TR Routing Specialist I  
Gen Ed, MKV, Foster Router  
12-month

**Kim Lamb**  
TR Specialist I  
Special Ed Router  
12-month

**TR Specialist I  
Driver Trainer**  
Tim Lash

**Dispatch**  
Christy Malgarin

**AAV Office Manager**  
Carol Sells

**Lisa Wallis**  
Transportation Dispatch  
Gen Ed, MKV, Foster Router  
10-month

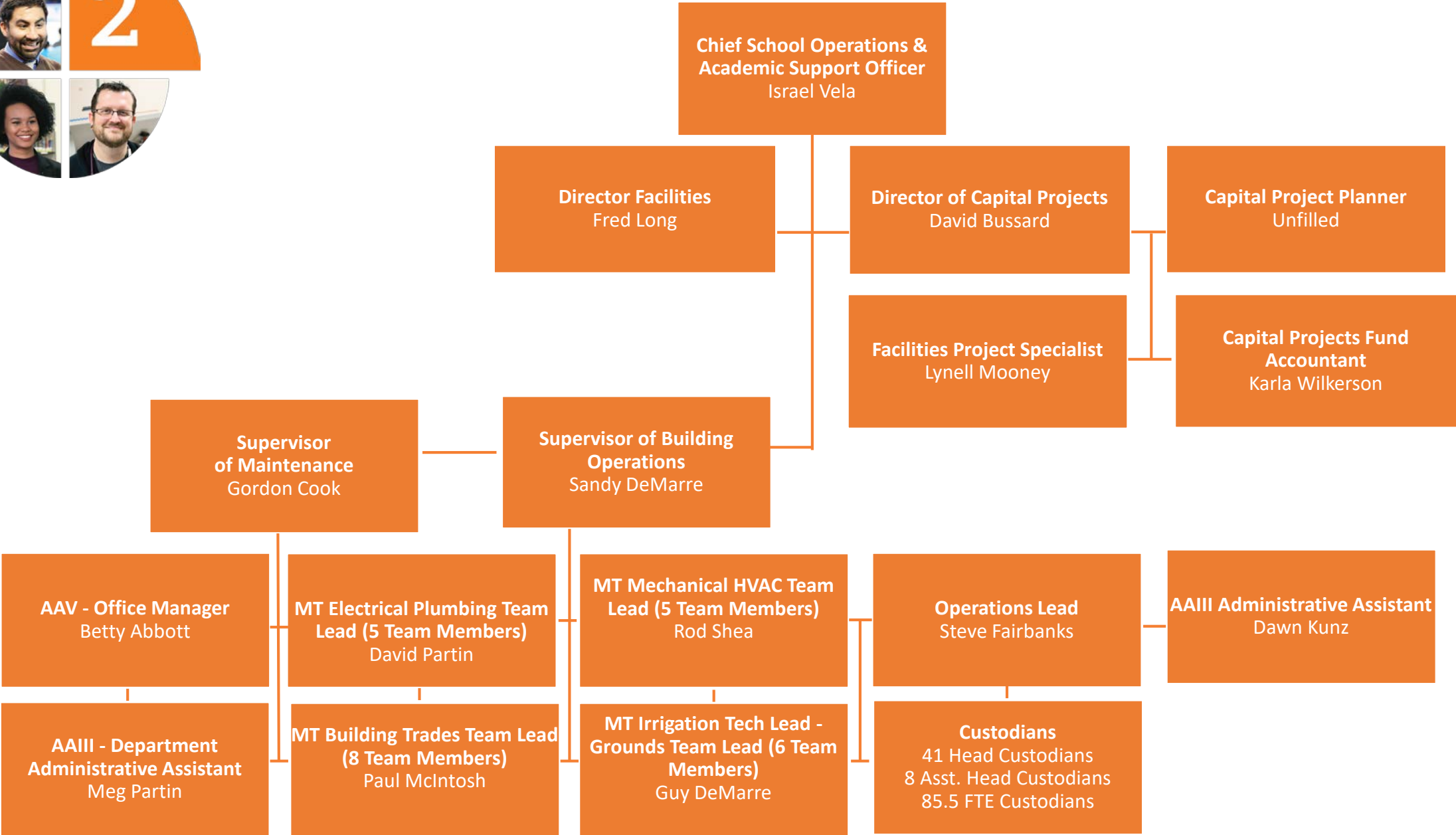
38 Special Ed drivers

**AAIV Department  
Admin. Assistant**  
Mary Ardissonne

91 regular route drivers

**AAII Department  
Admin. Assistant**  
Marie Rivera

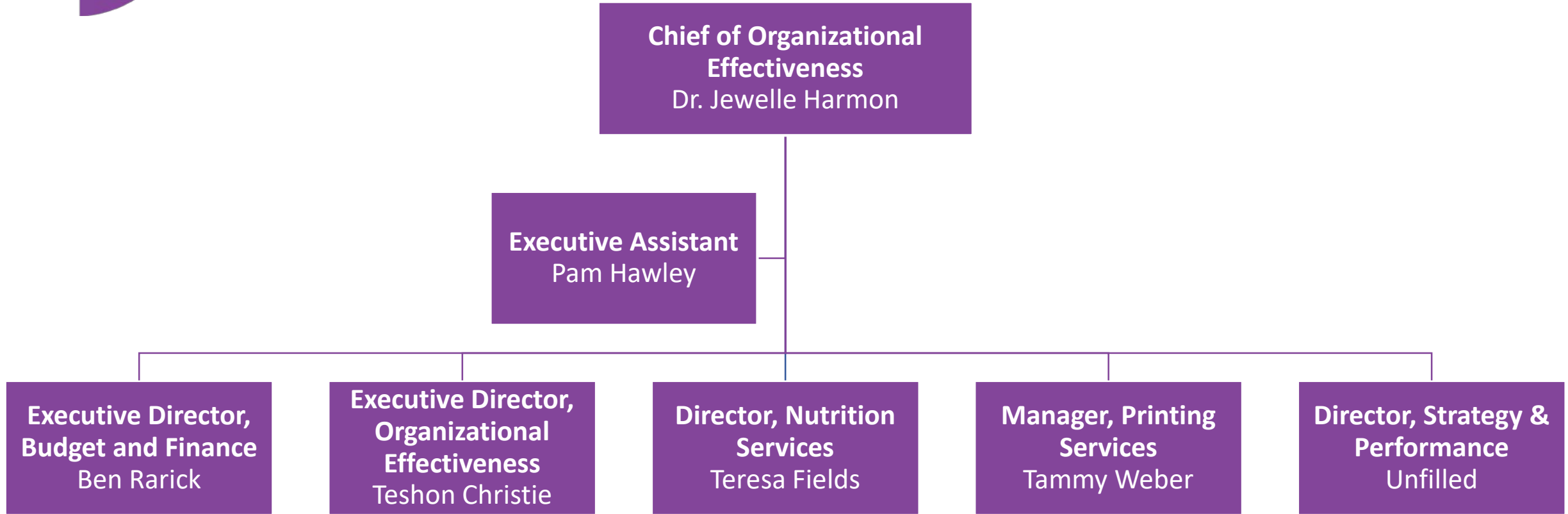




# Goal 3 *CREATE*

Create **effective organizational systems** that reinforce equity and excellence.





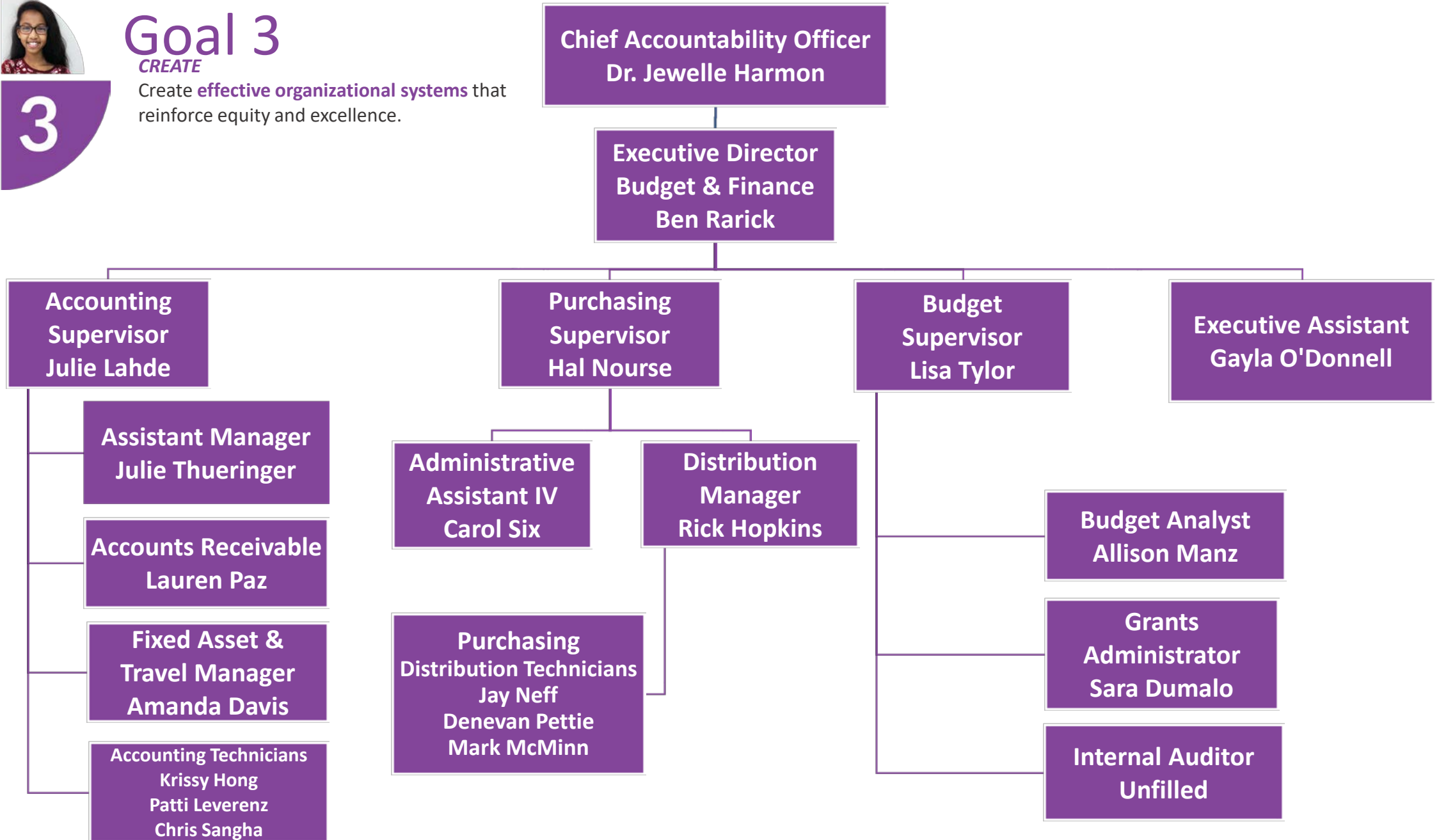


# Goal 3

**CREATE**

Create **effective organizational systems** that reinforce equity and excellence.

3



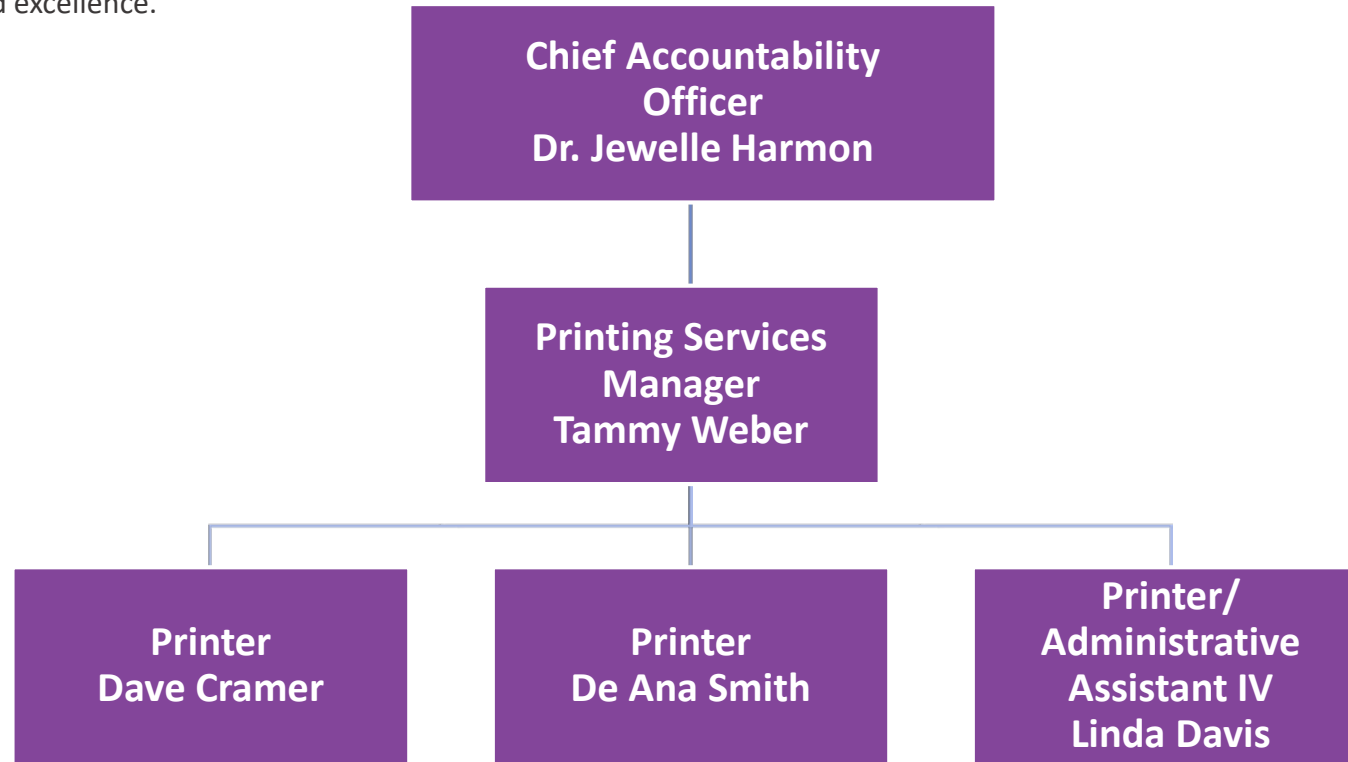




# Goal 3

*CREATE*

Create **effective organizational systems** that reinforce equity and excellence.





# Goal 3

**CREATE**

Create **effective organizational systems** that reinforce equity and excellence.

# 3

**Chief Accountability Officer**  
**Dr. Jewelle Harmon**

**Nutrition Services Director**  
**Teresa Fields**

**Administrative Assistant II**  
Annette Wong  
(Personnel)  
**Administrative Assistant III**  
Sandi Bizak  
(Free & Reduced Applications)  
**Administrative Assistant III**  
Alva Nitta  
(Lunch Money Now & Accounts Payable)

**Field & Technology Supervisor**  
**Melissa Erwin**

**Elementary School Supervisor**  
**Lynne Mayer**

**Dietician**  
**Alison Landry**

**Central Kitchen Production Supervisor**  
**Alexandra Smart**

**Kitchen Maintenance Technician**  
**James Cutler**

**Olga Bashinskaya, Central Kitchen Production Supervisor**  
**Central Kitchen Helpers:**  
Tammi Brown, Zhanna Cheban, Min Cho, Carol Chow, Hsuehfei Coins, Andrew Dinsmore, Lilia Drofiak, Kim Erickson, Irma Fabian-Valencia, Zanaida Filon, Valentina Golub, Nazmun Kahn Dalila Leyva De Castellon, Shiau Lin, Qi Liu, Judith Lucke, Lyubov Nazuruk, Vera Pareyko, Louise Sousa, Leng Tea, Nag Yan, Qin Yeh

**Warehouse Manager**  
**Susie Simmons**

**Nutrition Services Drivers**  
Julian Almaraz  
Richard Boehme  
Yolanda Diaz  
Brent Nix  
Maya Montoya  
Patricia Roselle  
Gordon Shangrow



# Goal 3

*CREATE*

Create **effective organizational systems** that reinforce equity and excellence.

**Chief Accountability Officer  
Dr. Jewelle Harmon**

**Executive Director,  
Organizational Effectiveness  
Teshon Christie**

**Executive Assistant  
Traci Hollingsworth**

**Director, Research  
Ashley Birkeland**

**Director, IT Operations  
Tom Metcalf**

**Director, Assessment  
Telisa Reed**

**Assistant Director,  
Data Services & Support  
Michelle Chinn**

**Senior Project  
Manager  
Joelle Bejarano**

**Assistant Director,  
Digital Learning  
Jeff Thungc**



# Goal 3

*CREATE*

Create **effective organizational systems** that reinforce equity and excellence.

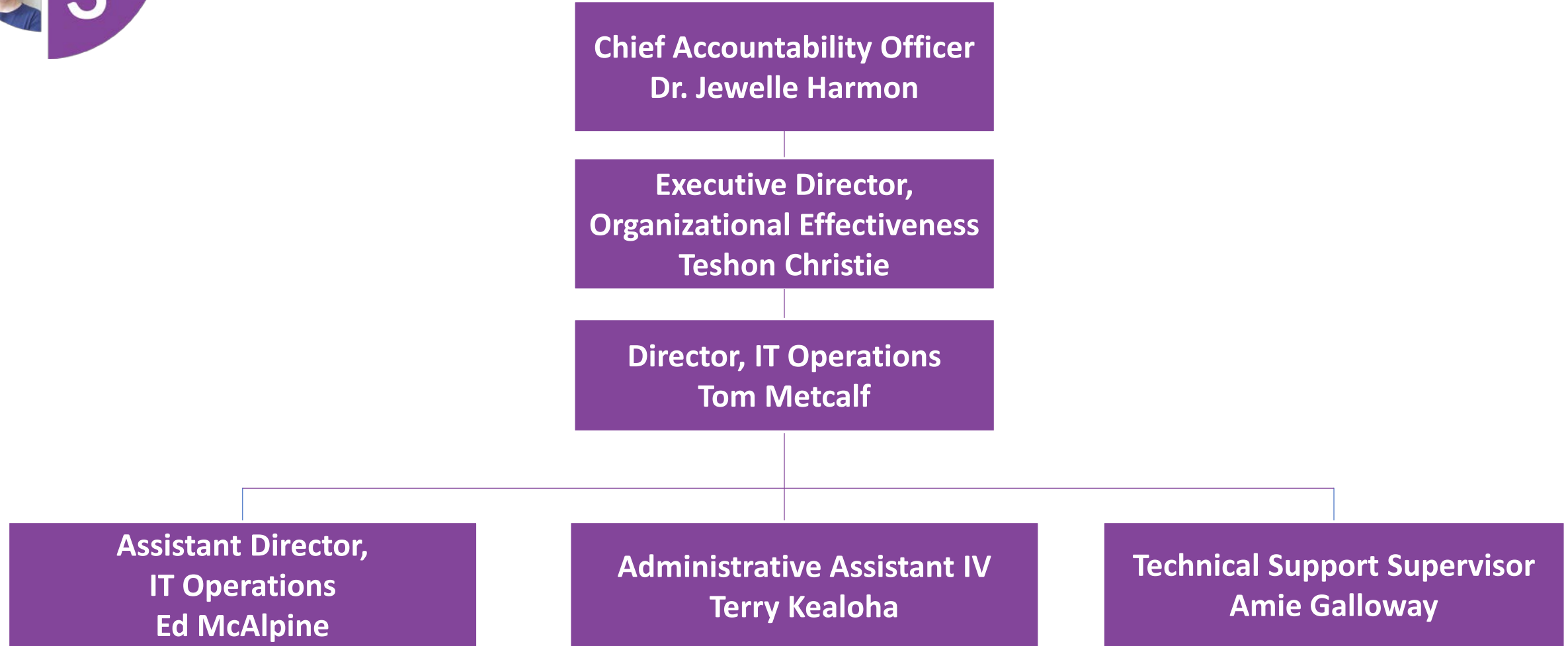




# Goal 3

**CREATE**

Create **effective organizational systems** that reinforce equity and excellence.

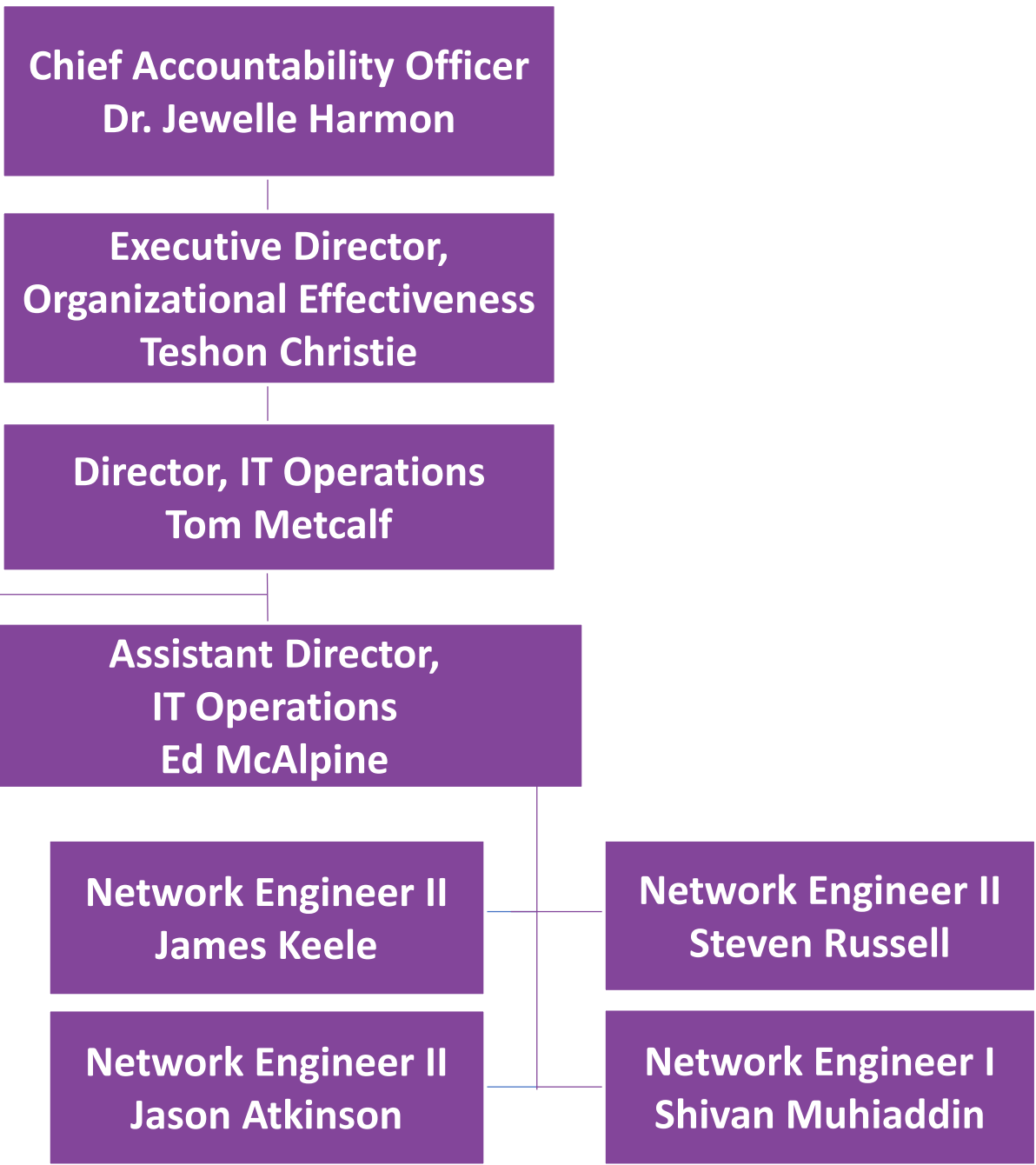




# Goal 3

**CREATE**

Create **effective organizational systems** that reinforce equity and excellence.



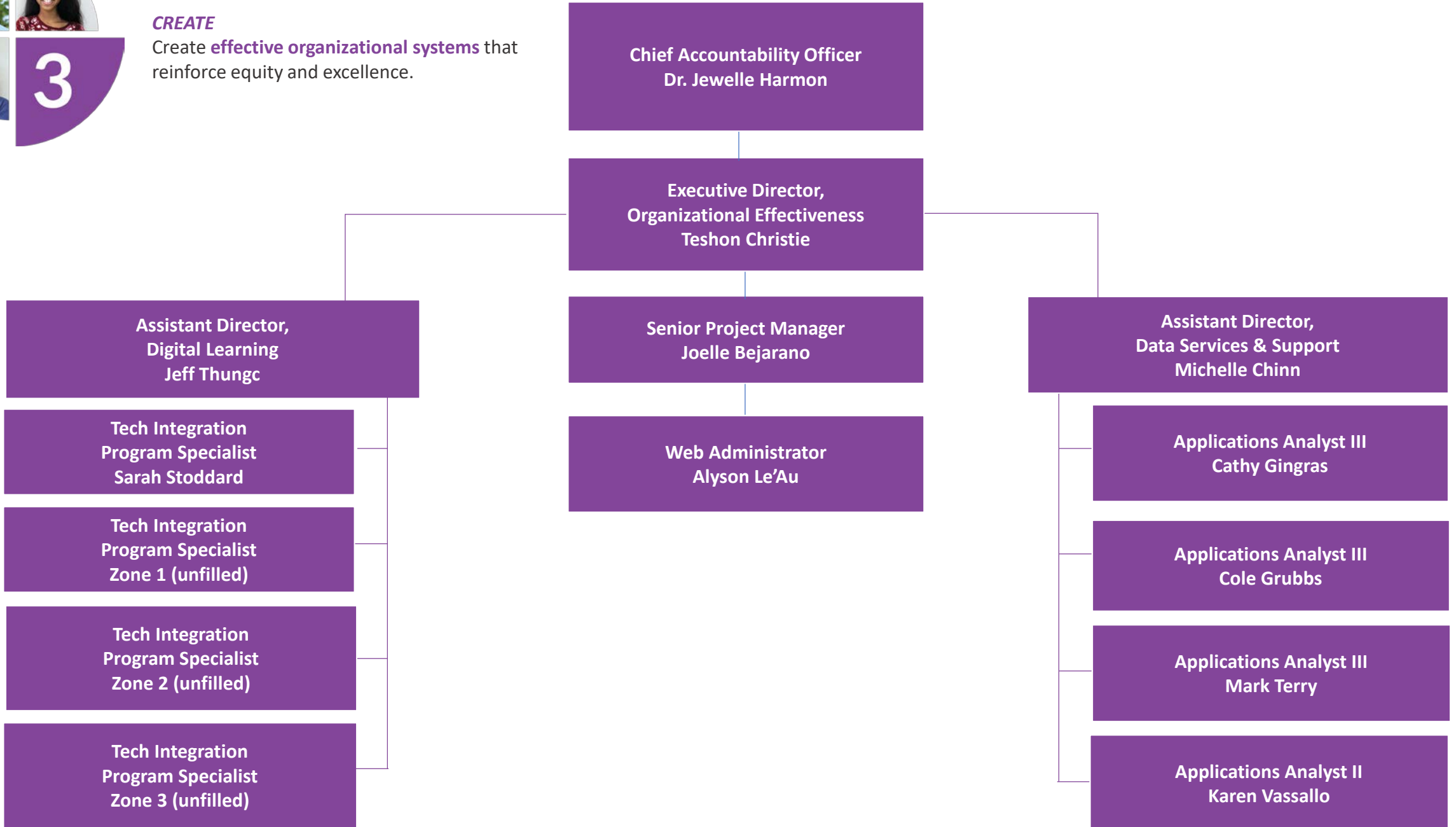


Goal 3

**CREATE**

Create **effective organizational systems** that reinforce equity and excellence.

3





**Goal 3**

**CREATE**

**Create effective organizational systems that reinforce equity and excellence.**

**3**

**Administrative Assistant IV  
Traci Hollingsworth**

**CSC Lead  
Tyler Boaz**

**Help Desk Specialist II  
Alyssa Francis**

**Help Desk Specialist II  
Kathy Hill**

**Chief Accountability Officer  
Dr. Jewelle Harmon**

**Executive Director,  
Organizational Effectiveness  
Teshon Christie**

**Director, IT Operations  
Tom Metcalf**

**Technical Support Supervisor  
Amie Galloway**

**Application Tech Specialist II  
Gwen Nanninga**

**Tech Support Specialist III  
Zach Otto**

**Tech Support Specialist III  
Erik Earles**

**Tech Support Specialist II  
Brian Smith**

**Tech Support Specialist II  
Hunter Patterson**

**Tech Support Specialist Lead  
Travis Haas**

**Tech Support Specialist I  
Lane Kuxhausen**

**Tech Support Specialist I  
Vince Santamaria**

**Tech Support Specialist I  
Nathan Crawford**

**Tech Support Specialist I  
Erica Stenseth**

**Tech Support Specialist I (KW)  
David Morrison**

**Tech Support Specialist I (KR)  
Ben Simpson**

**Tech Support Specialist I (KM)  
Max Maxwell**

**Tech Support Specialist I (KL)  
Zackary Jones**

**Technology Support Interns (7)**





## Goal 4 ***DEVELOP***

Recruit, hire, develop, and retain a diverse and **premier workforce.**

