

Cedar Valley Elementary

Walk to School Plan

In order to maximize student safety and the efficiency of the parking lot traffic flow, students who enter the front of the school are asked to follow these guidelines:

Walkers

- **Use both crosswalks in the morning.** Crossing guards are scheduled to be available 20 minutes prior to the start of school and 15 minutes after school is dismissed.
- **Use only the south crosswalk in the afternoon** (the one closest to the bottom of the hill). There will be crossing guards available for students to cross the entry and exit to the parking lot. We are only using one crosswalk to have a smaller impact on traffic.
- Students always need to follow safety precautions when crossing a street. These include looking both ways before stepping onto the street, and walking- not- running. Always make sure vehicles are stopped before entering the crosswalk.
- Do not ride bicycles across the street and on the school sidewalks and grounds during arrival and dismissal.
- Please do not cut across parking lot islands. Use crosswalks and sidewalks.

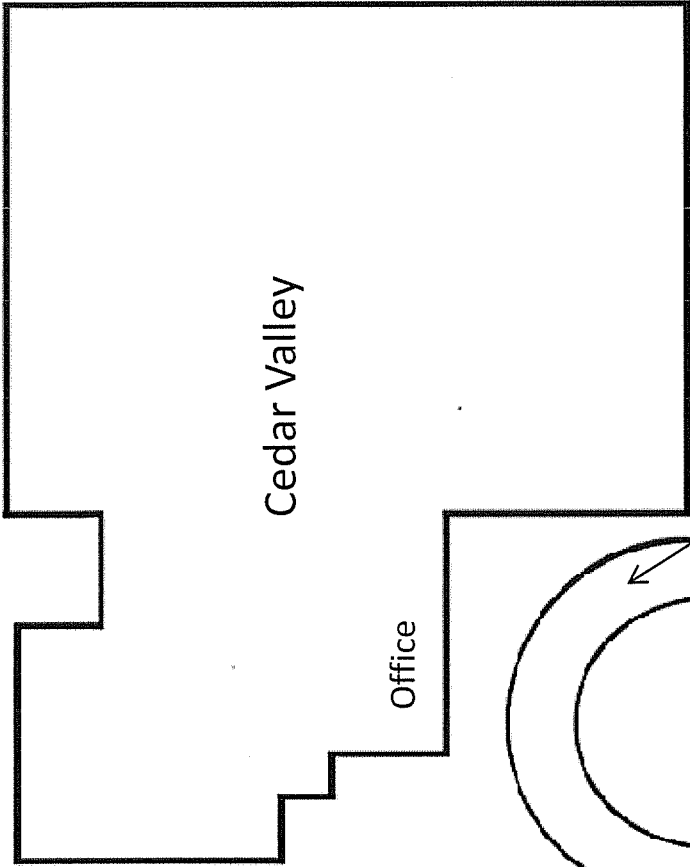
Drivers

- Traffic moves in a loop in parent pick-up area. Enter along left side exit along building side.
- Parents MUST USE the marked parking stalls if getting out of their vehicles.
- **The Bus/Day Care Van loop is closed at all times** to parents during arrival and dismissal times.
- Please follow directions of teachers directing traffic.
- No left turns from the school onto Timberlane Way SE as indicated by sign.

Drop-off/Pick-up Zones

- **Morning**
 - Along the curb near the Cheetah Den.
 - Along the curb in the north parking lot.
 - At the top of the stairs at the intersection of 194th Ave SE and SE 265th Street.
 - Behind the school at the entrance to the playground on SE 263rd Street.
 - Along Timberlane WY SE. You will need to park appropriately.
- **Afternoon**
 - Along the curb in the north parking lot.
 - At the top of the stairs at the intersection of 194th Ave SE and SE 265th Street
 - Behind the school at the entrance to the playground on SE 263rd Street
 - Along Timberlane WY SE. You will need to park appropriately.

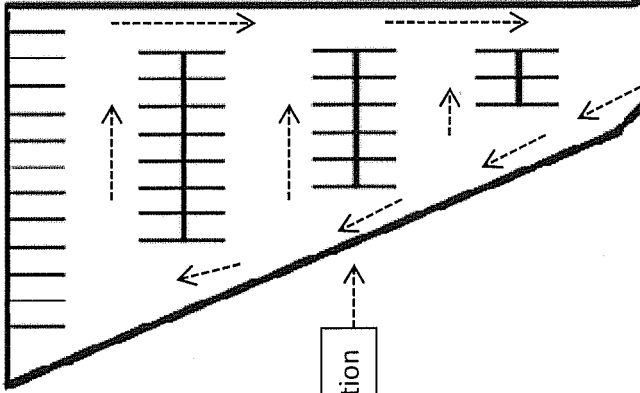
The Covington Police traffic officer has strongly suggested using the entrance to the back of the school and at the top of the stairs as an excellent pick-up and drop-off spots. Using these spots will help reduce traffic in Cedar Valley's crowded parking lot.



Bus/Daycare Loop
No Parent Drop-off

AM-Parent Drop off
Please do not block traffic.

Crossing Guards
Available in PM



PM-Parking Lot
Traffic directors

North Crosswalk
Closed in PM.

Timberlane Way SE

Timberlane Way SE